



SPECIFICATIONS

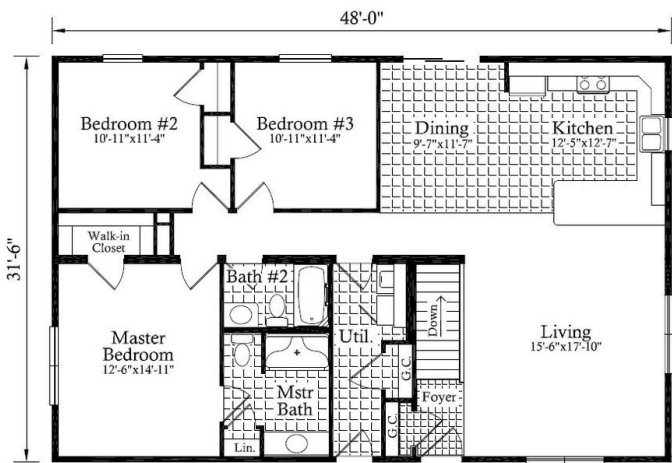
SQ. FT.	1512
BEDROOMS:	3
BATHROOMS:	2.0
LEVELS:	1.0

OPTIONAL FEATURES

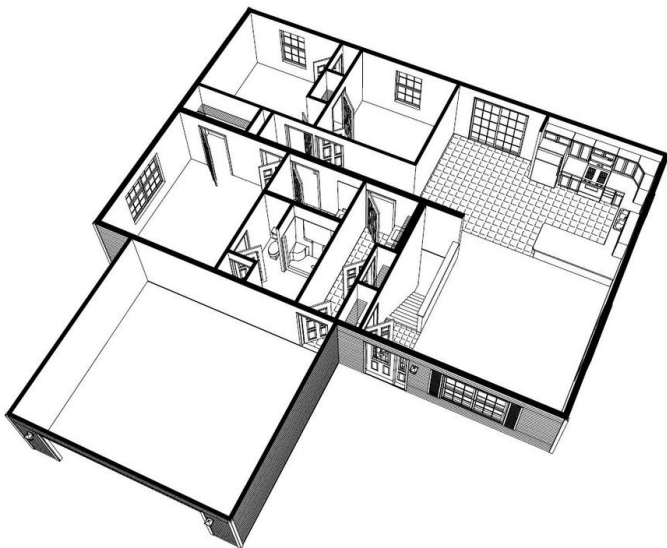
- ☒ Green Certification ☒ Energy Star

The Johnson home plan is a spacious and modern single-story home. With three bedrooms and two bathrooms, this home is perfect for families or those who love to entertain. The main floor features an open concept living room, dining room, and kitchen with ample natural light pouring in through the large windows. The kitchen includes a peninsula island and plenty of storage space. The primary bedroom includes an ensuite bathroom and walk-in closet. The two additional bedrooms share a full bathroom and there is large a laundry room. This home also offers a front porch and a two-car garage. The Johnson home plan offers plenty of space and modern amenities for a comfortable and stylish lifestyle.

FIRST FLOOR



3D WITH OPTIONAL GARAGE



YOUR
NEW HOME
CONSULTANT



Hi, I'm Justin Bryant, your personal Modular Home Consultant

I would be happy to help you with any questions you may have. You can contact me on my direct number at **(877) 410-6334** or email me at justin.bryant@impresamodular.com.

