

MADISON . HTR-001

Traditional



SPECIFICATIONS

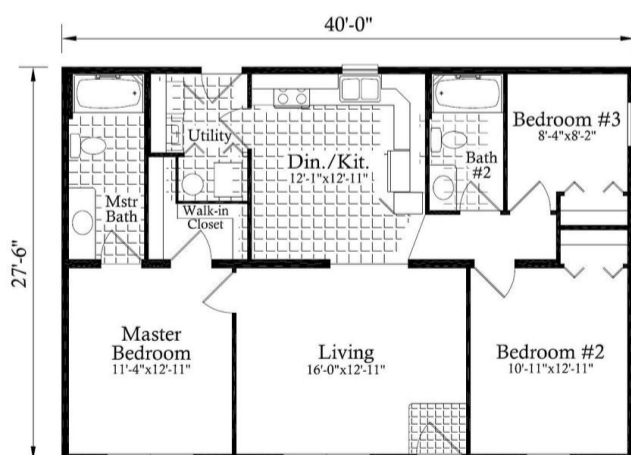
SQ. FT.	1100
BEDROOMS:	3
BATHROOMS:	2.0
LEVELS:	1.0

OPTIONAL FEATURES

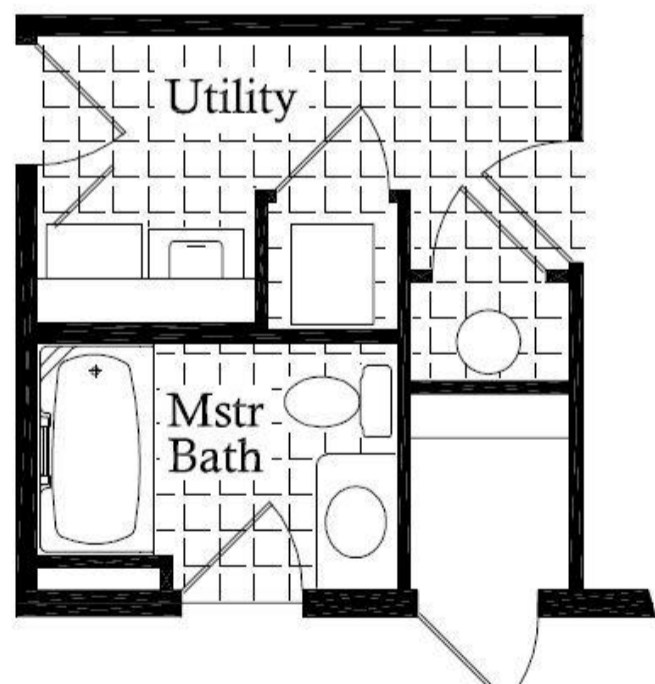
- Green Certification
- Energy Star

The Madison HTR home plan features a contemporary design with a spacious and open floor plan. The main living area features a large living room. Dining area with a modern kitchen combo with plenty of storage space. The master suite includes a large bedroom, a walk-in closet, and a luxurious bathroom with a tub and shower combination. The other two bedrooms located on the opposite side of the home share a second bathroom. There is also a laundry room. The Madison HTR home plan is designed for comfortable and modern living.

FIRST FLOOR



OPTIONAL MASTER BATH



YOUR
NEW HOME



Hi, I'm , your personal Modular Home Consultant



I would be happy to help you with any questions you may have. You can contact me on my direct number at or email me at .

