



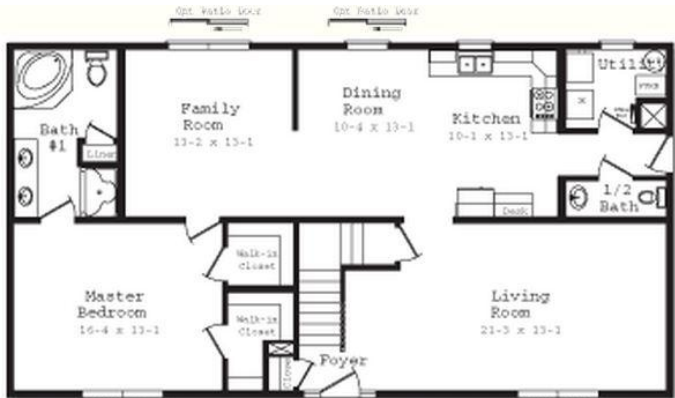
**SPECIFICATIONS**

SQ. FT.	1438
BEDROOMS:	1
BATHROOMS:	1.5
LEVELS:	1.5

**OPTIONAL FEATURES**

- ☒ Green Certification    ☒ Energy Star

**FIRST FLOOR**



YOUR  
NEW HOME  
CONSULTANT



**Hi, I'm Justin Bryant, your personal Modular Home Consultant**

I would be happy to help you with any questions you may have. You can contact me on my direct number at **(877) 410-6334** or email me at [justin.bryant@impresamodular.com](mailto:justin.bryant@impresamodular.com).