

# PLUM. INT-004

Traditional



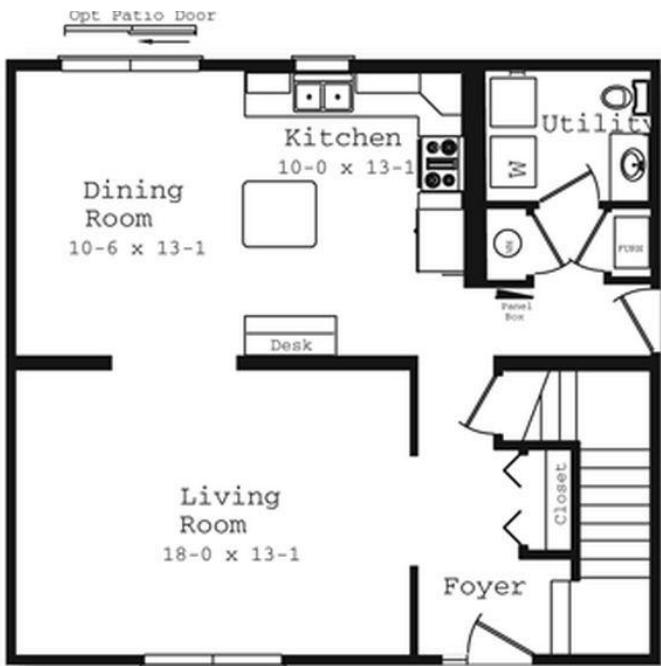
### SPECIFICATIONS

SQ. FT.	1660
BEDROOMS:	3
BATHROOMS:	2.5
LEVELS:	2.0

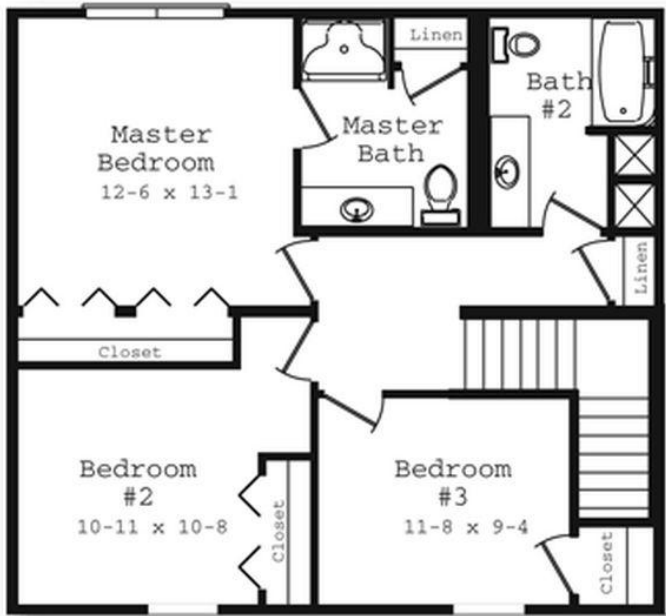
### OPTIONAL FEATURES

- ☒ Green Certification
- ☒ Energy Star

#### FIRST FLOOR



#### SECOND FLOOR



YOUR  
NEW HOME  
CONSULTANT



Hi, I'm Justin Bryant, your personal Modular Home Consultant

I would be happy to help you with any questions you may have. You can contact me on my direct number at **(877) 410-6334** or email me at [justin.bryant@impresamodular.com](mailto:justin.bryant@impresamodular.com).