



SPECIFICATIONS

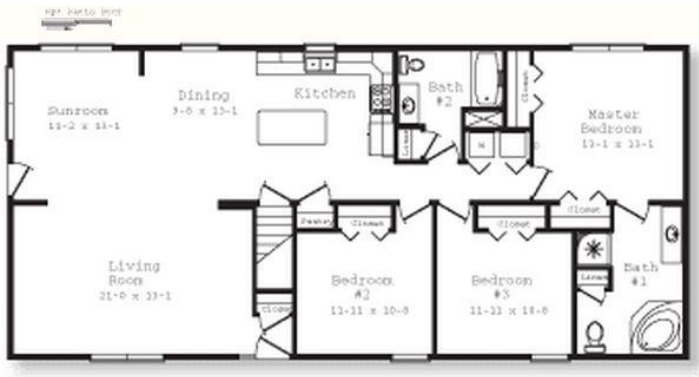
SQ. FT.	1660
BEDROOMS:	3
BATHROOMS:	2.0
LEVELS:	1.0

OPTIONAL FEATURES

- ☒ Green Certification ☒ Energy Star

This Ranch Style home with an open floor plan is sure to please everyone. Kitchen, sunroom and living room are all open to one another. The kitchen has an island as well. The master bath has a corner garden tub that you will surely enjoy at the end of a long day. The washer and dryer are efficiently located in the hall surrounded by the bedrooms.

FIRST FLOOR



YOUR
NEW HOME
CONSULTANT



Hi, I'm Justin Bryant, your personal Modular Home Consultant

I would be happy to help you with any questions you may have. You can contact me on my direct number at **(877) 410-6334** or email me at justin.bryant@impresamodular.com.