

# TALMADGE. ACC-052

Traditional



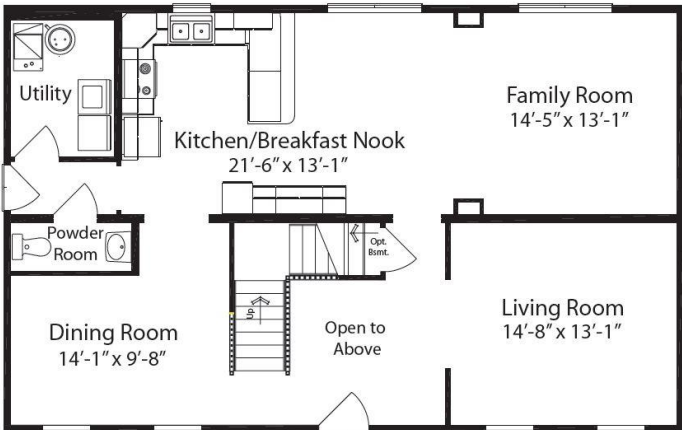
### SPECIFICATIONS

SQ. FT.	2334
BEDROOMS:	3
BATHROOMS:	2.5
LEVELS:	2.0

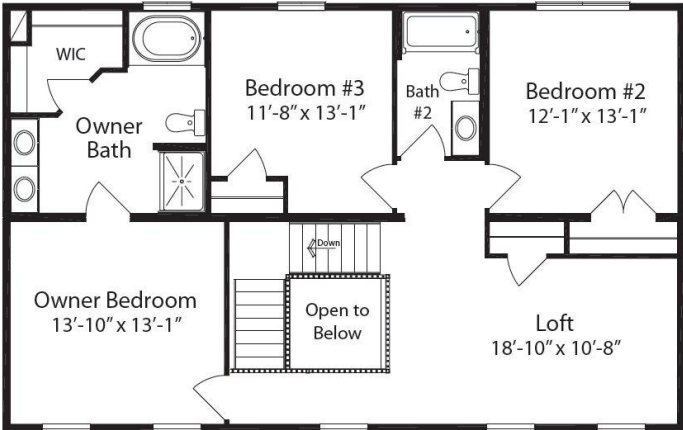
### OPTIONAL FEATURES

- ☒ Green Certification
- ☒ Energy Star

#### FIRST FLOOR



#### SECOND FLOOR



YOUR  
NEW HOME  
CONSULTANT

Hi, I'm , your personal Modular Home Consultant

I would be happy to help you with any questions you may have. You can contact me on my direct number at or email me at .