

KIMBERLIN . HES-007

Traditional



SPECIFICATIONS

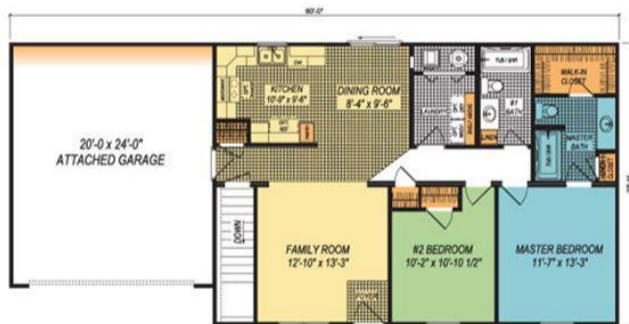
SQ. FT.	1110
BEDROOMS:	2
BATHROOMS:	2.0
LEVELS:	1.0

OPTIONAL FEATURES

- Green Certification
- Energy Star

The Kimberlin's Specific Features - o Convenient and Open Floorplan with Rear Sliding Door o Laundry Centrally Located o Second Bath Great for Guests o Master Bedroom with Master Bath and Walk-In Closet o 6'X14' Welcoming Front Porch

FIRST FLOOR



CRAWL SPACE OPTION



YOUR
NEW HOME
CONSULTANT



Hi, I'm , your personal Modular Home Consultant

I would be happy to help you with any questions you may have. You can contact me on my direct number at or email me at .

