

# WINMARK . HES-005

Traditional



## SPECIFICATIONS

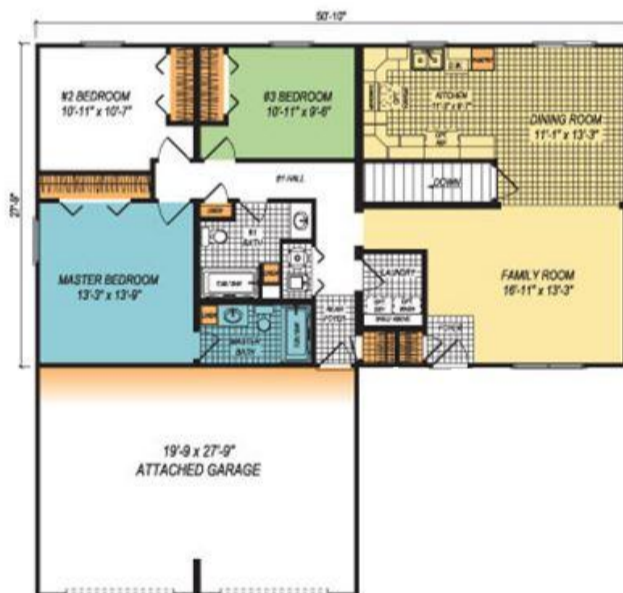
SQ. FT.	1411
BEDROOMS:	3
BATHROOMS:	2.0
LEVELS:	1.0

## OPTIONAL FEATURES

- Green Certification
- Energy Star

The WinMark's Specific Features - o Roomy Kitchen with Plenty of Storage Space o Open Floor Plan o Rear Foyer and Closet o Separated Laundry Room with Natural Light

### FIRST FLOOR



### CRAWL SPACE OPTION



YOUR  
NEW HOME  
CONSULTANT



Hi, I'm , your personal Modular Home Consultant

I would be happy to help you with any questions you may have. You can contact me on my direct number at or email me at .

