

# OXFORD III. HHC-021

Traditional



## SPECIFICATIONS

|            |      |
|------------|------|
| SQ. FT.    | 3345 |
| BEDROOMS:  | 4    |
| BATHROOMS: | 2.5  |
| LEVELS:    | 2.0  |

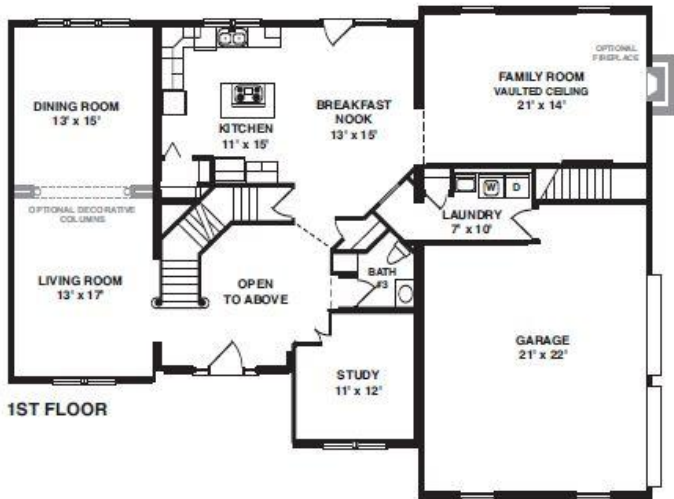
## OPTIONAL FEATURES

- ☒ Green Certification
- ☒ Energy Star

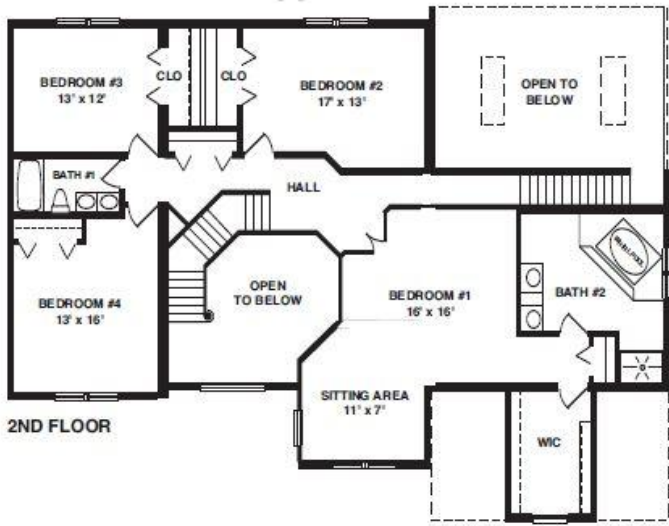
A double deck front balcony, single gable, and two dormers above the garage are the eye-catching exterior features of this traditional American-design. Optional fireplaces are available in both the living room and family area. In addition to the vast kitchen/breakfast nook, the first floor also features an impressive library. An enormous master suite has double walk-in closets and an optional tray ceiling. This accents the four upstairs bedrooms.

\* Artist's rendering may contain optional items.

### FIRST FLOOR



### SECOND FLOOR



YOUR  
NEW HOME  
CONSULTANT

Hi, I'm , your personal Modular Home Consultant

I would be happy to help you with any questions you may have. You can contact me on my direct number at or email me at .