

FULTON. HHC-020

Traditional



SPECIFICATIONS

SQ. FT.	3216
BEDROOMS:	6
BATHROOMS:	2.5
LEVELS:	2.0

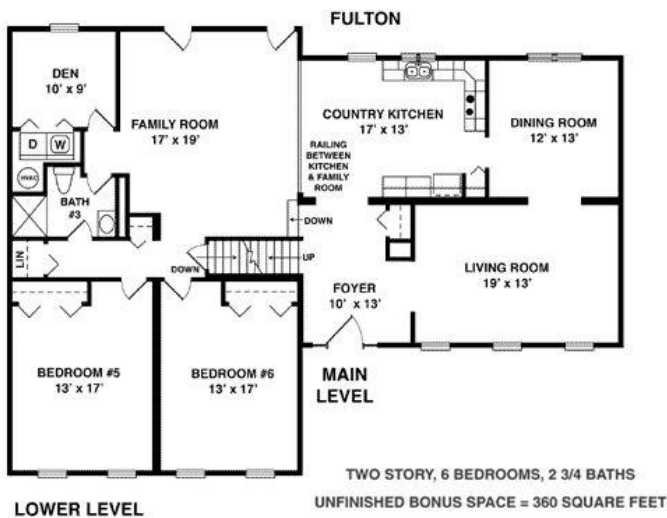
OPTIONAL FEATURES

- ☒ Green Certification
- ☒ Energy Star

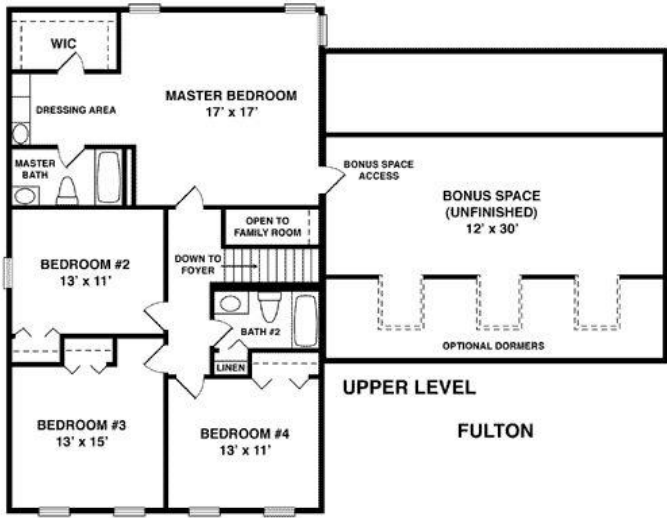
Six bedrooms distinguish the almost 3,300 square feet of living space in this country-style design. A large family room, den, and two bedrooms define the lower level. On the main level is an elongated living room, spacious dining room and a country-style kitchen. The upper level consists of four bedrooms, a dressing area in the master suite, and 360 square feet of unfinished space for a future entertainment room.

* Artist's rendering may contain optional items.

FIRST FLOOR



SECOND FLOOR



YOUR
NEW HOME
CONSULTANT

Hi, I'm , your personal Modular Home Consultant

I would be happy to help you with any questions you may have. You can contact me on my direct number at or email me at .