

# WALLINGFORD I. HHC-011

Traditional



### SPECIFICATIONS

SQ. FT.	3028
BEDROOMS:	4
BATHROOMS:	2.5
LEVELS:	2.0

### OPTIONAL FEATURES

- ☒ Green Certification
- ☒ Energy Star

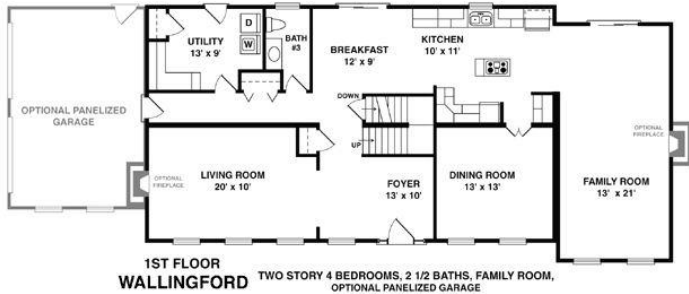
Four front-facing dormers and a panelized garage are among the options that distinguish this grand colonial design. A fireplace in both the living room and enormous family area are part of alternate plans for this layout. A fireplace can also be included in the upstairs master suite. Three more bedrooms, two baths and abundant closet space complete the second floor.

\* Artist's rendering may contain optional items.

### SECOND FLOOR



### FIRST FLOOR



1ST FLOOR WALLINGFORD TWO STORY 4 BEDROOMS, 2 1/2 BATHS, FAMILY ROOM, OPTIONAL PANELIZED GARAGE

YOUR  
NEW HOME  
CONSULTANT



Hi, I'm Justin Bryant, your personal Modular Home Consultant

I would be happy to help you with any questions you may have. You can contact me on my direct number at **(877) 410-6334** or email me at [justin.bryant@impresamodular.com](mailto:justin.bryant@impresamodular.com).