

# CARLSBAD. DPB-013

CabinContemporaryLog Style



## SPECIFICATIONS

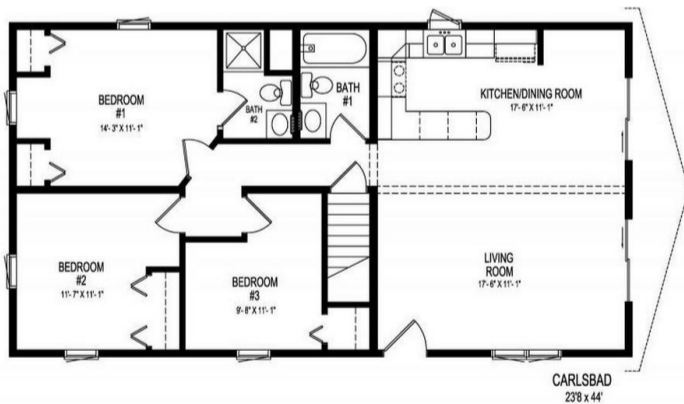
SQ. FT.	1056
BEDROOMS:	3
BATHROOMS:	1.5
LEVELS:	1.0

## OPTIONAL FEATURES

- Green Certification
- Energy Star

The Carlsbad is a spacious house plan. This single-story home features an open-concept living area, dining room, and kitchen with an extended peninsula island. All 3 bedrooms are located on one side of the house. The primary comes complete with a walk-in closet and ensuite bathroom. The two additional bedrooms share a bathroom. The Carlsbad is featured with a walk out basement. With its attractive exterior and practical layout, the Carlsbad is an excellent home for someone just starting out, couples, or retirees.

## FIRST FLOOR



YOUR  
NEW HOME  
CONSULTANT

Hi, I'm , your personal Modular Home Consultant

I would be happy to help you with any questions you may have. You can contact me on my direct number at or email me at .