

CHESAPEAKE IV . DPB-007

Traditional



SPECIFICATIONS

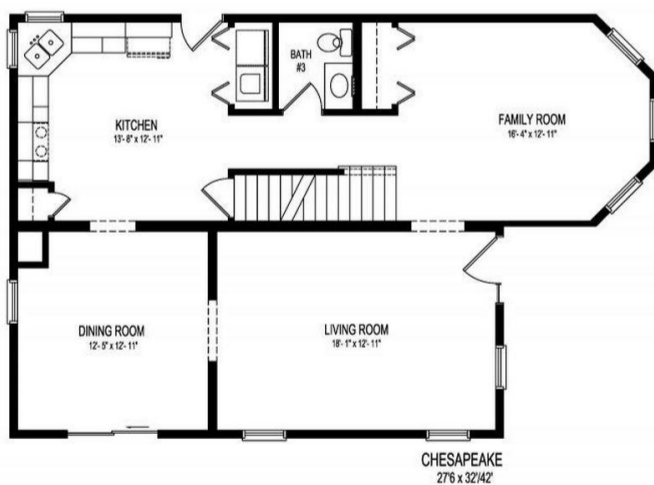
SQ. FT.	2035
BEDROOMS:	3
BATHROOMS:	2.5
LEVELS:	2.0

OPTIONAL FEATURES

- Green Certification
- Energy Star

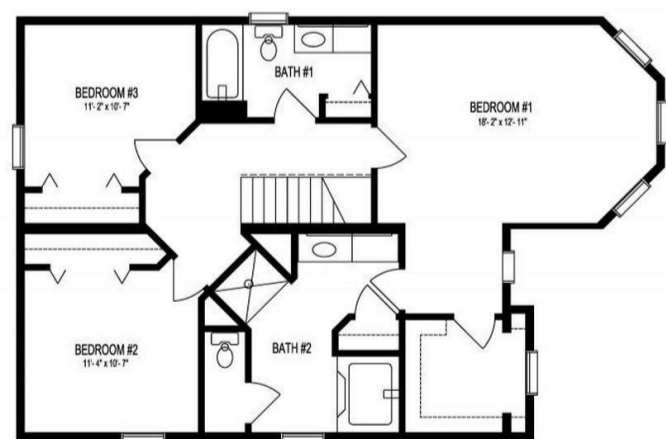
The Chesapeake has so many design elements that give this plan curb appeal. With the bump out you are able to have a larger living room and master bedroom. The porch is great for sitting out in the evening relaxing after a busy day. The gable roofs give the home great dimensions. The master bedroom has a huge walk in closet that even has a window for natural light.

FIRST FLOOR



CHESAPEAKE
276 x 32/42'

SECOND FLOOR



CHESAPEAKE
276 x 32/42'

YOUR
NEW HOME
CONSULTANT



Hi, I'm , your personal Modular Home Consultant

I would be happy to help you with any questions you may have. You can contact me on my direct number at or email me at .

