

# KIDEN. AAC-036

Traditional



### SPECIFICATIONS

SQ. FT.	2367
BEDROOMS:	3
BATHROOMS:	2.5
LEVELS:	1.5

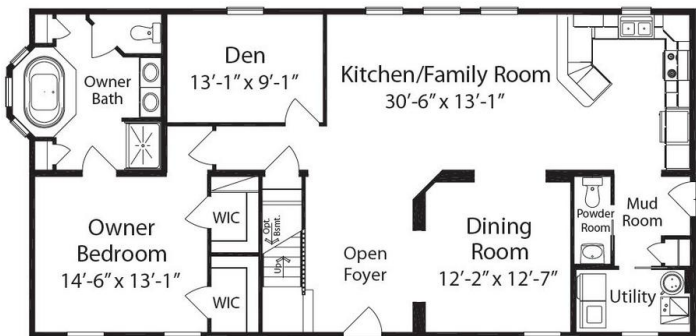
### OPTIONAL FEATURES

- ☒ Green Certification
- ☒ Energy Star

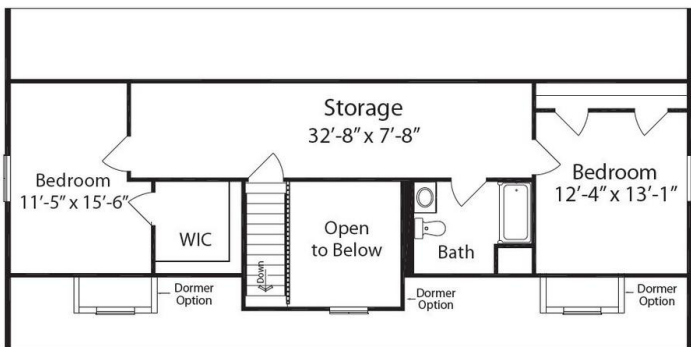
The Kiden features an elegant style and rich appointments throughout. You will love the way the dramatic dining room looks as you enter the home along with the inviting kitchen and family room combination. The luxurious garden tub is always waiting whenever you need a little time to yourself.

Note: Cape Models come with an unfinished 2nd floor that can be completed on site. Listed square footage, bedrooms and baths include 2nd story living.

#### FIRST FLOOR



#### SECOND FLOOR



YOUR  
NEW HOME  
CONSULTANT



Hi, I'm Justin Bryant, your personal Modular Home Consultant

I would be happy to help you with any questions you may have. You can contact me on my direct number at **(877) 410-6334** or email me at [justin.bryant@impresamodular.com](mailto:justin.bryant@impresamodular.com).