

LAUREL BAY B. MCC-005

CabinChaletCoastalJersey Shore



SPECIFICATIONS

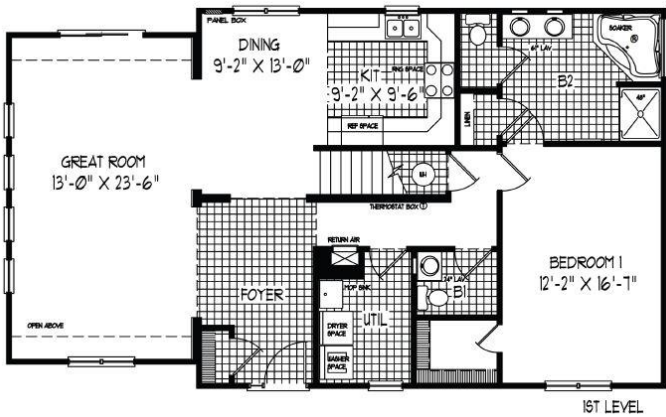
SQ. FT.	1921
BEDROOMS:	3
BATHROOMS:	2.5
LEVELS:	1.0

OPTIONAL FEATURES

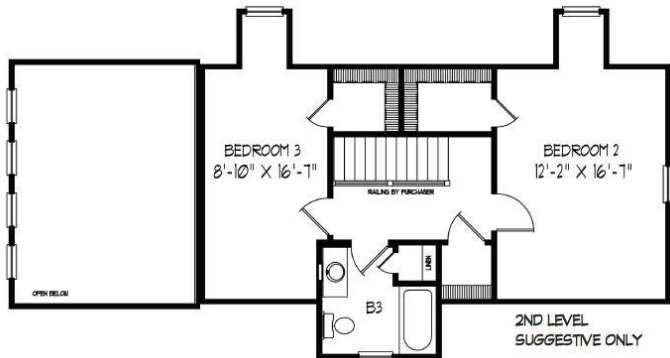
- ☒ Green Certification
- ☒ Energy Star

The Laurel Bay B home plan is a spacious and elegant ranch-style home that spans 1,921square feet. It features an open concept layout with a large great room, kitchen, and dining area. The master suite includes a walk-in closet and a private bathroom with a dual-sink vanity, walk-in shower, and separate soaking tub. Two additional bedrooms share a second full bathroom on the upper floor. There is a laundry room located on the main level for added convenience. This home also includes a front deck.

FIRST FLOOR



SUGGESTED SECOND FLOOR



YOUR
NEW HOME
CONSULTANT

Hi, I'm , your personal Modular Home Consultant

I would be happy to help you with any questions you may have. You can contact me on my direct number at or email me at .