

HAYWARD. EAH-008

Traditional



SPECIFICATIONS

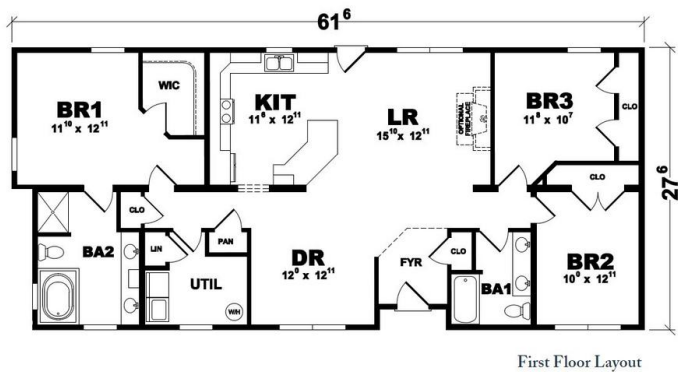
| | |
|------------|------|
| SQ. FT. | 1644 |
| BEDROOMS: | 3 |
| BATHROOMS: | 2.0 |
| LEVELS: | 1.0 |

OPTIONAL FEATURES

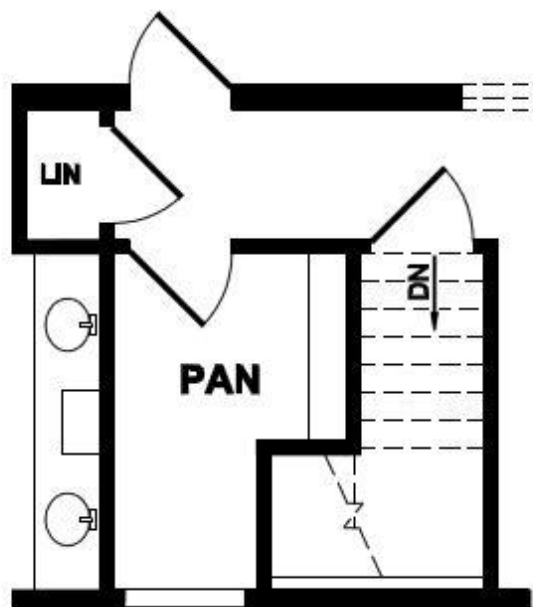
- ☒ Green Certification
- ☒ Energy Star

For entertaining or just relaxing, the Hayward has the layout you’ve been looking for. Host dinner guests in the dining room, or enjoy casual family breakfasts at the bulletin bar-top seating between the kitchen and the living room. The three bedrooms are complemented by two baths, each with matching his/hers sinks. But you’ll want to keep the spacious master bathroom all to yourself.

FIRST FLOOR



BASEMENT OPTION



Basement Stair Option

YOUR
NEW HOME
CONSULTANT

Hi, I'm , your personal Modular Home Consultant

I would be happy to help you with any questions you may have. You can contact me on my direct number at or email me at .

