

# BARCLAY. EAH-001

Traditional



### SPECIFICATIONS

SQ. FT.	1315
BEDROOMS:	3
BATHROOMS:	2.5
LEVELS:	1.5

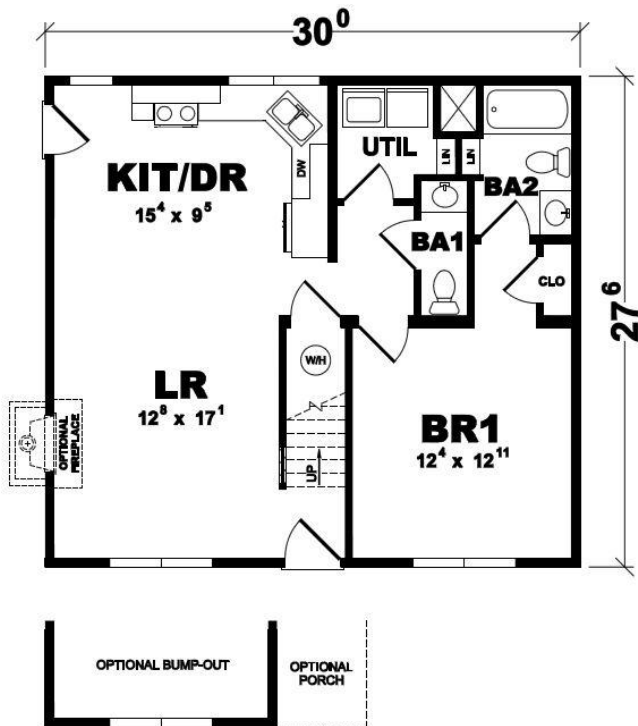
### OPTIONAL FEATURES

- ☒ Green Certification
- ☒ Energy Star

Two words capture the Barclay design: just right. Its 3 bedrooms and 2.5 baths are situated for maximum convenience and efficiency, providing ample living space coupled with beautiful simplicity. Porch, fireplace and bump-out options give you the flexibility to customize the Barclay into the “just right” home you’ve always imagined.

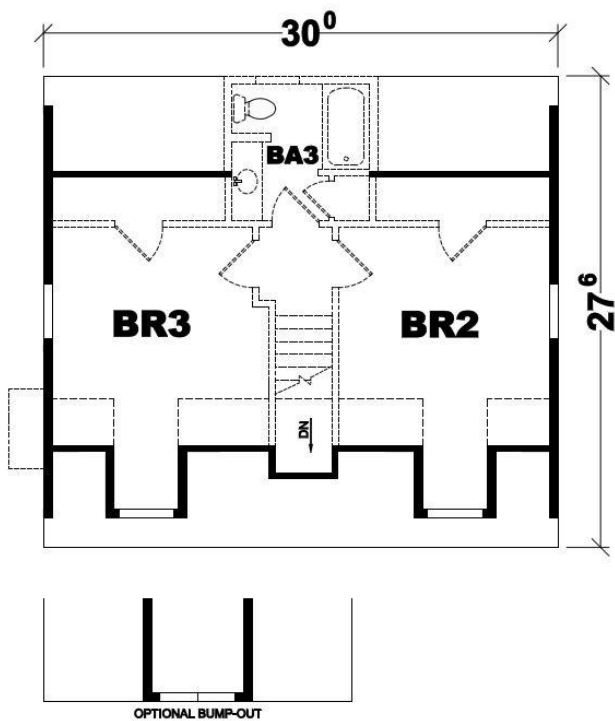
Note: Cape Models come with an unfinished 2nd floor that can be completed on site. Listed square footage, bedrooms and baths include 2nd story living.

#### FIRST FLOOR



First Floor Layout

#### PROPOSED SECOND FLOOR



Proposed Second Floor Layout

YOUR  
NEW HOME  
CONSULTANT



**Hi, I'm Justin Bryant, your personal Modular Home Consultant**

I would be happy to help you with any questions you may have. You can contact me on my direct number at **(877) 410-6334** or email me at [justin.bryant@impresamodular.com](mailto:justin.bryant@impresamodular.com).