

WAKEFIELD MK. MCS-048

Traditional



SPECIFICATIONS

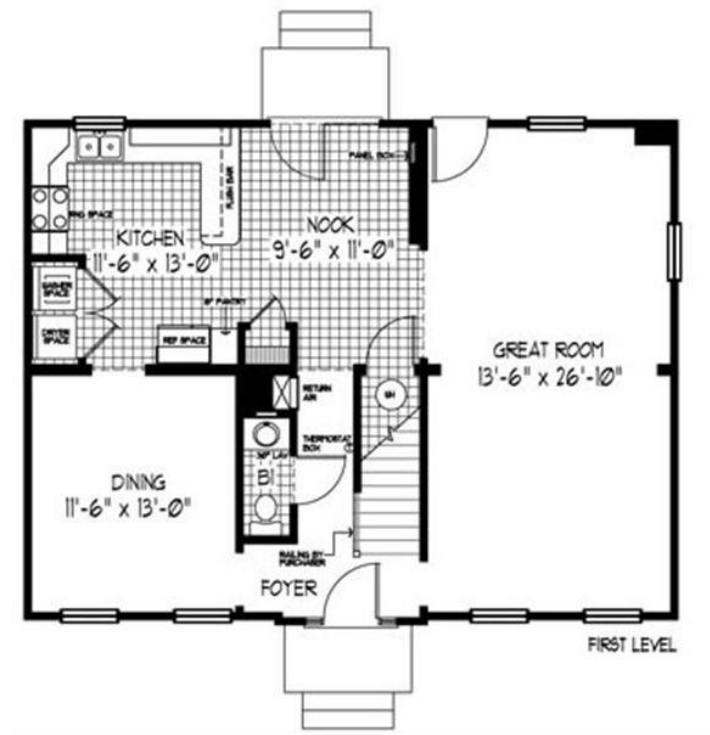
SQ. FT.	1980
BEDROOMS:	3
BATHROOMS:	2.5
LEVELS:	2.0

OPTIONAL FEATURES

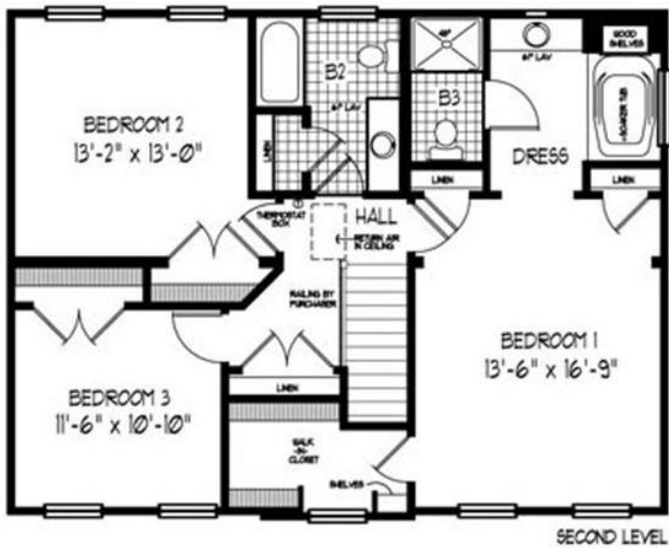
- ☒ Green Certification
- ☒ Energy Star

This plan is a beautiful mix of design and functionality which provides the most efficient use of space possible in a 1900 square foot home. There is a powder room right off the foyer for guest and then back to the open kitchen and breakfast nook. The kitchen has a bar that your company can sit at and chat with you while you prepare dinner. The master suite has a dressing area and a garden tub for relaxing after your company has left.

FIRST FLOOR



SECOND FLOOR



YOUR
NEW HOME
CONSULTANT

Hi, I'm , your personal Modular Home Consultant

I would be happy to help you with any questions you may have. You can contact me on my direct number at or email me at .