

# ALBANY MK. MCS-031

Traditional



## SPECIFICATIONS

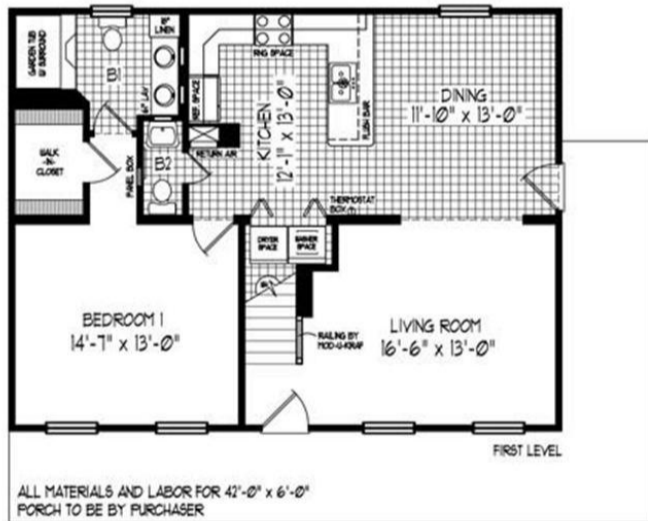
SQ. FT.	1670
BEDROOMS:	3
BATHROOMS:	2.5
LEVELS:	1.5

## OPTIONAL FEATURES

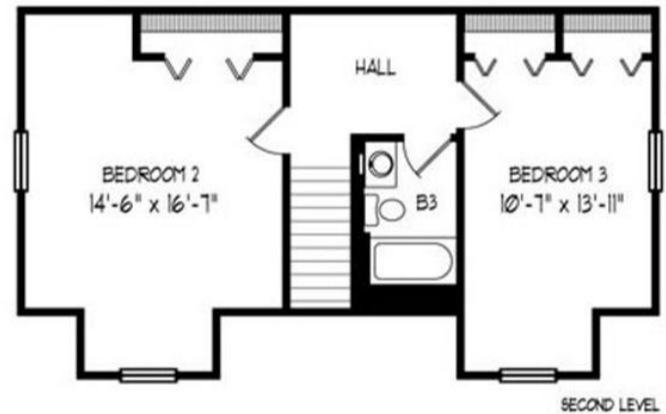
- Green Certification
- Energy Star

The Albany has a U-shaped kitchen and is open to the dining room. The master bathroom has a garden tub perfect for relaxing in after a busy day. It also has a double vanity and an impressive walk in closet. This one bedroom home can easily be turned into a 3 bedroom home later by finishing the upstairs.

### FIRST FLOOR



### SUGGESED SECOND FLOOR



YOUR  
NEW HOME  
CONSULTANT

Hi, I'm , your personal Modular Home Consultant

I would be happy to help you with any questions you may have. You can contact me on my direct number at or email me at .