

# MILLBROOKE . MCS-027

Traditional



## SPECIFICATIONS

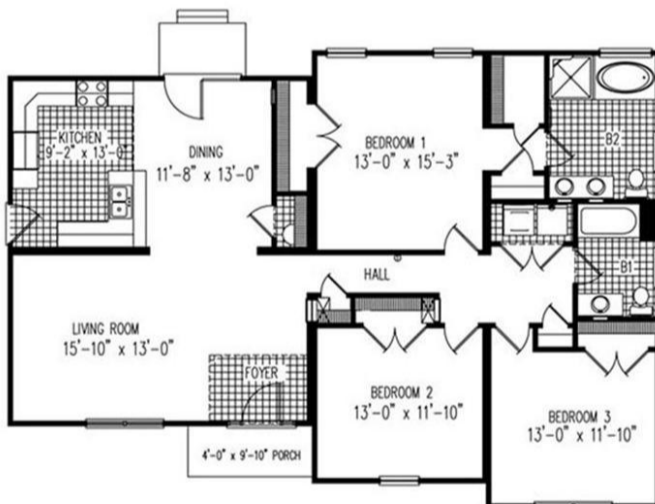
SQ. FT.	1622
BEDROOMS:	3
BATHROOMS:	2.0
LEVELS:	1.0

## OPTIONAL FEATURES

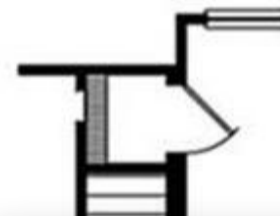
- Green Certification
- Energy Star

The Millbrooke has great curb presence with its double gable roof and covered front porch. Kitchen is open to the dining room and leads out to the back deck (on-site by others). The master bed room has a walk-in closet, double vanity and a garden tub. The washer and dryer are efficiently located in the hall surrounded by the bed rooms.

### FIRST FLOOR



### BASEMENT OPTION



Hi there! I'm Sophie, your AI chatbot, here to help answer your questions about Impresa Modular and our homes. I'll do my best to provide helpful, accurate answers. However, some questions, including pricing questions, are better suited for one of our team members. If you ever need more detailed information or want to connect with a real person, please go to our Contact page.

YOUR  
NEW HOME  
CONSULTANT



Hi, I'm , your personal Modular Ho

I would be happy to help  
contact me on my direct

