

# LIBERTY MK B . MCS-010

Traditional



## SPECIFICATIONS

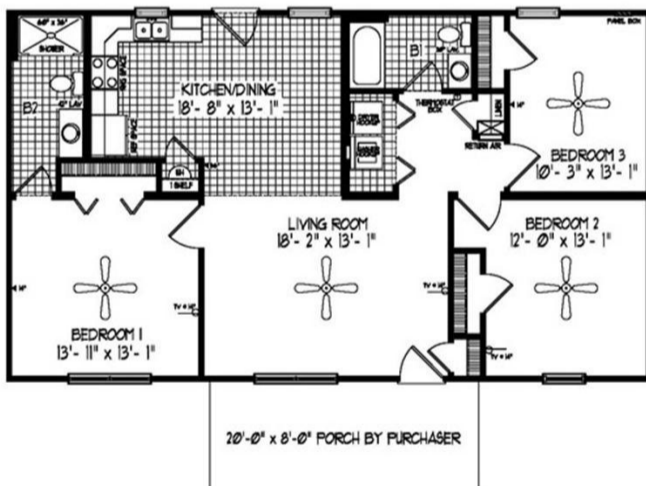
SQ. FT.	1322
BEDROOMS:	3
BATHROOMS:	2.0
LEVELS:	1.0

## OPTIONAL FEATURES

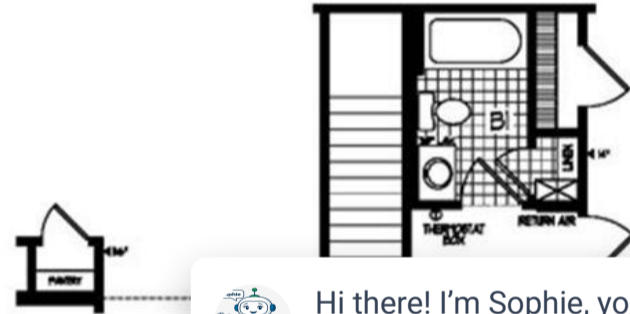
- Green Certification
- Energy Star

The wide open floor plan of the Liberty is a homebuyer's answer when looking for an affordable home with plenty of room. The kitchen/dining combo a back door for easy access to the outside for the person that likes to have cookouts all summer long. There is a master suite for your relaxing after all the company leaves from the cookout.

### FIRST FLOOR




### BASEMENT OPTION



YOUR NEW HOME CONSULTANT

Hi, I'm , your personal Modular Ho

I would be happy to help contact me on my direct



Hi there! I'm Sophie, your AI chatbot, here to help answer your questions about Impresa Modular and our homes. I'll do my best to provide helpful, accurate answers. However, some questions, including pricing questions, are better suited for one of our team members. If you ever need more detailed information or want to connect with a real person, please go to our Contact page.

