

WELLINGTON. MDS-004

Traditional



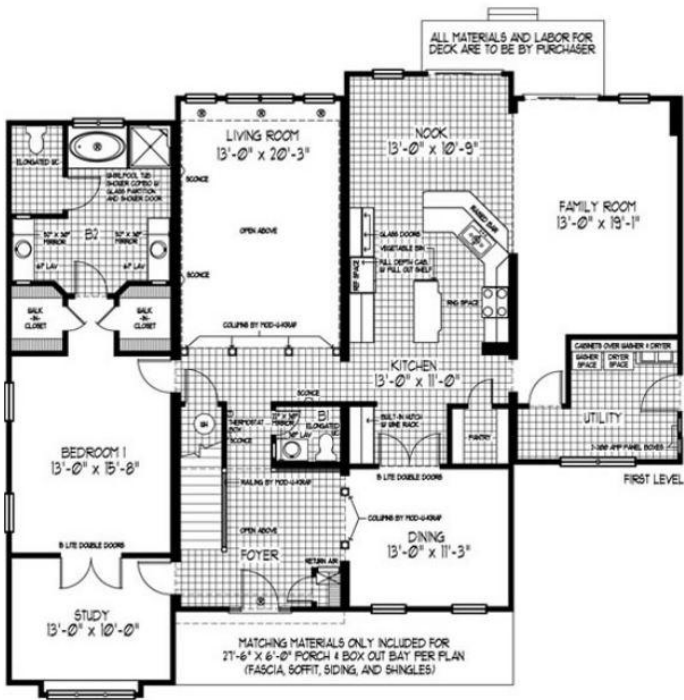
SPECIFICATIONS

SQ. FT.	4218
BEDROOMS:	4
BATHROOMS:	3.5
LEVELS:	2.0

OPTIONAL FEATURES

- ☒ Green Certification
- ☒ Energy Star

FIRST FLOOR



SECOND FLOOR



YOUR
NEW HOME
CONSULTANT



Hi, I'm Sara Griffin, your personal Modular Home Consultant

I would be happy to help you with any questions you may have. You can contact me on my direct number at **615-485-8878** or email me at sara.griffin@impresamodular.com.