

# EDINBURGH. MDS-001

Traditional



## SPECIFICATIONS

SQ. FT.	2322
BEDROOMS:	3
BATHROOMS:	2.5
LEVELS:	1.0

## OPTIONAL FEATURES

- ☒ Green Certification
- ☒ Energy Star

The Edinburgh home plan is a spacious and stylish home design. This one-story home boasts a total of 2,322 square feet and features three bedrooms, two and a half bathrooms, and an attached two-car garage.

The Edinburgh home plan is designed for entertaining and relaxation, with an open-concept living area that includes a large family room, dining area, and kitchen with an island and plenty of counter space.

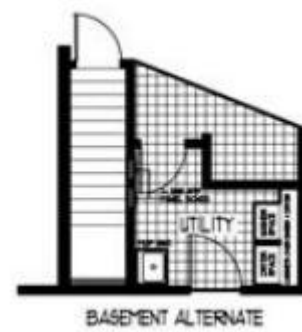
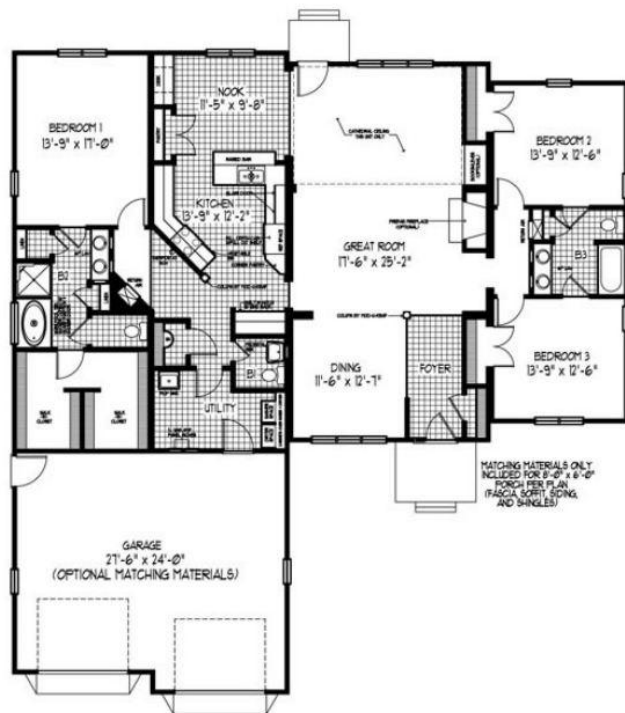
The primary bedroom suite provides a luxurious escape with a large bedroom, an ensuite bathroom featuring a soaking tub and separate shower, and his and hers spacious walk-in closet. Two additional bedrooms, a jack n jill full bathroom, and a convenient laundry room round out the main floor.

The exterior of the Edinburgh home plan features a charming covered entryway perfect for welcoming guests. The home's exterior can be customized with a variety of siding options, including vinyl, stone, and brick, allowing homeowners to create a look that suits their style preferences.

Overall, the Edinburgh home plan is a stunning and practical home design that offers ample space for a growing family or anyone who loves to entertain.

### FIRST FLOOR

### BASEMENT OPTION



YOUR  
NEW HOME  
CONSULTANT

Hi, I'm , your personal Modular Home Consultant

I would be happy to help you with any questions you may have. You can contact me on my direct number at or email me at .