

# BELIZE . MVC-005

Cabin Chalet Coastal Contemporary



## SPECIFICATIONS

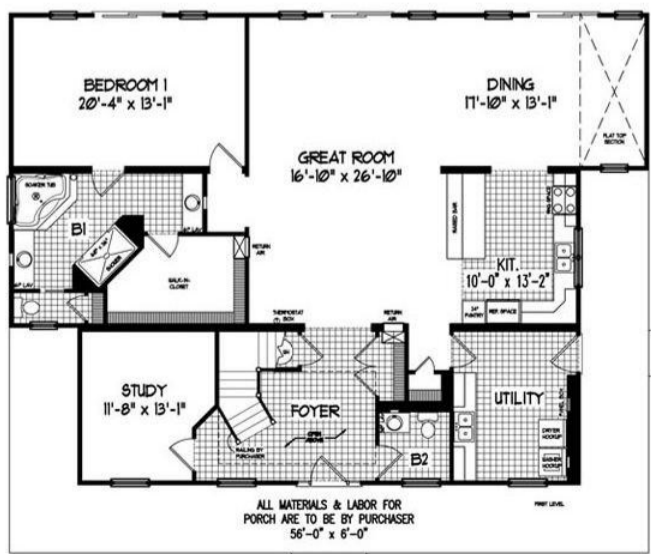
SQ. FT.	2950
BEDROOMS:	3
BATHROOMS:	2.5
LEVELS:	1.0

## OPTIONAL FEATURES

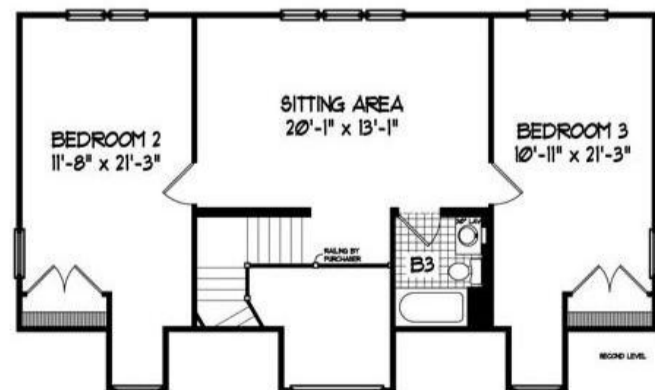
- Green Certification
- Energy Star

This is a beautifully detailed craftsman floor plan that lives bigger than its 2,950 square feet when second floor is finished. A wrap around front porch gives sheltered entry and creates a nice place set to the side for a porch swing with plenty of room to actually swing. A formal foyer leads to the family living area. The master bedroom is right off the great room on the first floor. The master bath is so lavish with its huge walk in closet and Garden tub.

### FIRST FLOOR



### SUGGESTED SECOND FLOOR



YOUR  
NEW HOME  
CONSULTANT



## Hi, I'm , your personal Modular Home Consultant

I would be happy to help you with any questions you may have. You can contact me on my direct number at or email me at .

