

MODEL 2495. FEM-024

Traditional



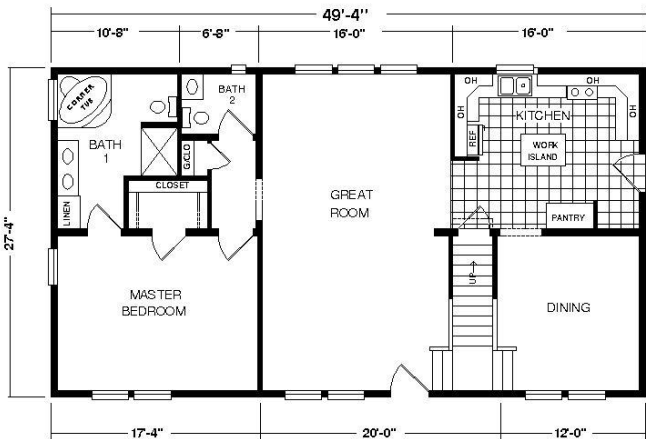
SPECIFICATIONS

SQ. FT.	2523
BEDROOMS:	3
BATHROOMS:	2.0
LEVELS:	1.5

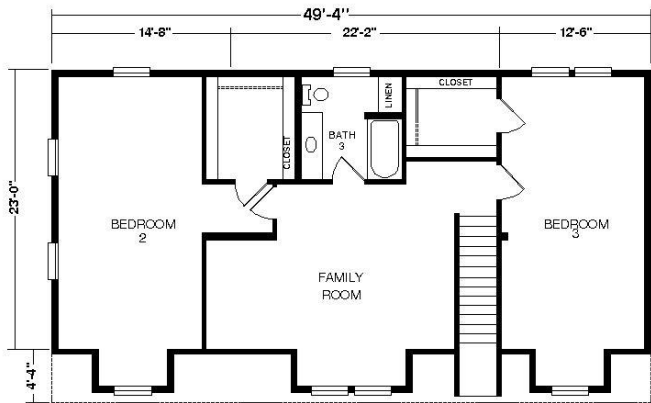
OPTIONAL FEATURES

- ☒ Green Certification
- ☒ Energy Star

FIRST FLOOR



SECOND FLOOR



YOUR
NEW HOME
CONSULTANT

Hi, I'm , your personal Modular Home Consultant

I would be happy to help you with any questions you may have. You can contact me on my direct number at or email me at .