

MODEL 2492. FEM-023

Traditional



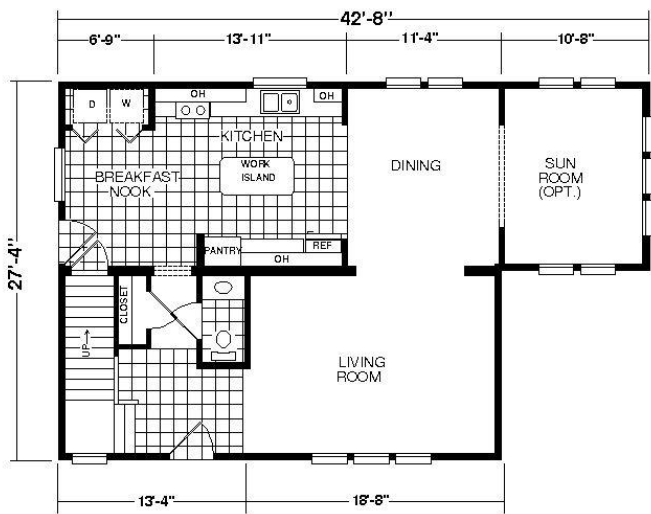
SPECIFICATIONS

SQ. FT.	1749
BEDROOMS:	3
BATHROOMS:	2.5
LEVELS:	2.0

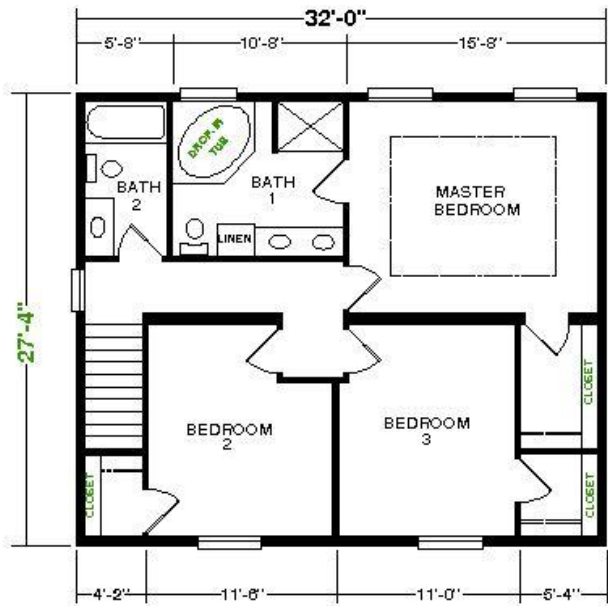
OPTIONAL FEATURES

- ☒ Green Certification
- ☒ Energy Star

FIRST FLOOR



SECOND FLOOR



YOUR
NEW HOME
CONSULTANT



Hi, I'm Justin Bryant, your personal Modular Home Consultant

I would be happy to help you with any questions you may have. You can contact me on my direct number at **(877) 410-6334** or email me at justin.bryant@impresamodular.com.