

OAKDALE – COASTAL . NMS-023

Coastal Jersey Shore



SPECIFICATIONS

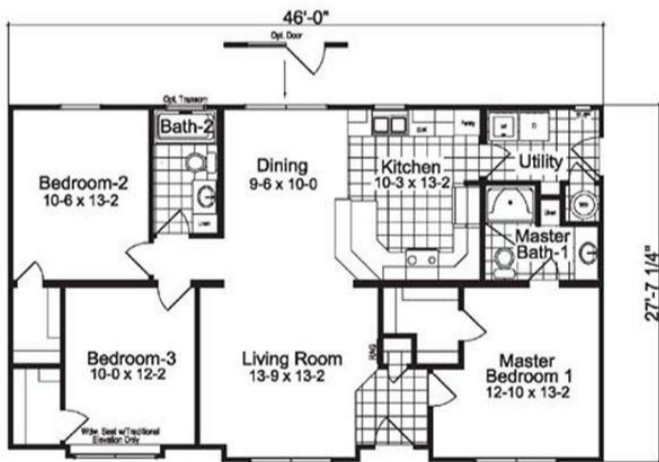
SQ. FT.	1248
BEDROOMS:	3
BATHROOMS:	2.0
LEVELS:	1.0

OPTIONAL FEATURES

- Green Certification
- Energy Star

A traditional ranch features three bedrooms with the master separated from the secondary bedrooms, two full baths, separate utility and a large kitchen for cooking and family gatherings at the snack bar. Options include an alternative master bath, a basement and an alternative elevation plan.

FIRST FLOOR



OPT MASTER BATH



YOUR
NEW HOME
CONSULTANT



Hi, I'm , your personal Modular Home Consultant

I would be happy to help you with any questions you may have. You can contact me on my direct number at or email me at .

