

# ASHWOOD – TRADITIONAL. NMS-003

Traditional



### SPECIFICATIONS

SQ. FT.	2116
BEDROOMS:	4
BATHROOMS:	3.0
LEVELS:	1.5

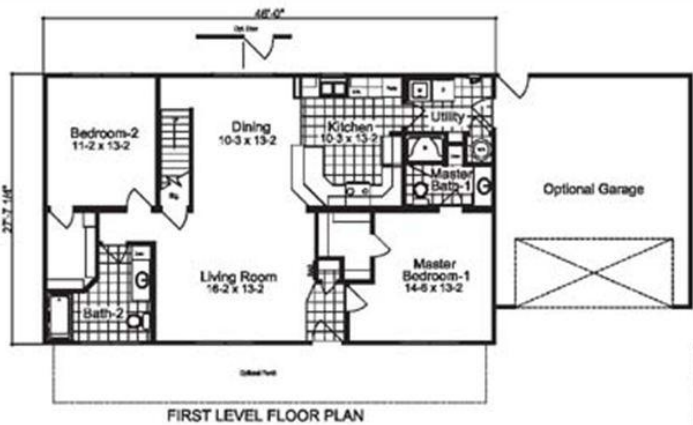
### OPTIONAL FEATURES

- ☒ Green Certification
- ☒ Energy Star

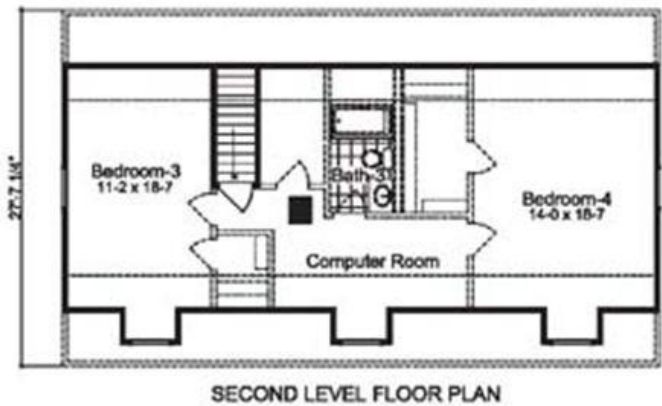
Our first Cape Cod design in this collection, the Ashwood, 2,116 potential finished square feet, provides 2 bedrooms on the first floor and the opportunity for builder or customer to complete 2 additional bedrooms in the upper level. The rear stairway keeps the living rooms' spacious open feel in place. The secondary bath has large space with built in linen closet for storage. Options include an alternative master bath, garage, a basement and an alternative elevation plan.

Note: Cape Models come with an unfinished 2nd floor that can be completed on site. Listed square footage, bedrooms and baths include 2nd story living.

#### FIRST FLOOR



#### SECOND FLOOR



YOUR  
NEW HOME  
CONSULTANT

Hi, I'm , your personal Modular Home Consultant

I would be happy to help you with any questions you may have. You can contact me on my direct number at or email me at .