

# MODEL X. IML-010

ChaletLog Style



### SPECIFICATIONS

SQ. FT.	1320
BEDROOMS:	2
BATHROOMS:	2.0
LEVELS:	1

### OPTIONAL FEATURES

- ☒ Green Certification
- ☒ Energy Star

The Model X is a modern house plan that offers a total living area of 1,320 square feet. This stunning home features two bedrooms, two bathrooms, and an open living area that encompasses the kitchen, dining, and living room.

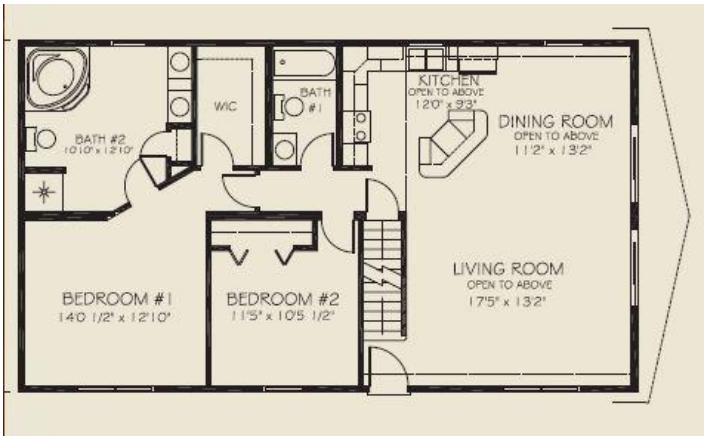
As you enter the home, you are greeted by a bright and open living room that flows seamlessly into the dining and kitchen areas. The kitchen is equipped with modern appliances, a large center island, and ample counter space, making it perfect for cooking and entertaining. The dining area is conveniently located adjacent to the kitchen, providing a comfortable space to enjoy meals with family and friends.

The master bedroom features a large walk-in closet and an ensuite bathroom with dual sinks, a shower, and a bathtub. The second bedroom of the home also has a large closet and a nearby bathroom with a bathtub and shower.

The Model X also features a spacious optional deck that offers the perfect place to relax and enjoy the outdoors.

This modular house plan is designed to be energy-efficient, with features such as high-efficiency HVAC systems and Energy Star appliances. It is also customizable, allowing homeowners to make changes and additions to fit their unique needs and preferences. Overall, the Model X is a stylish and functional home that is perfect for couples or small families looking for a comfortable and modern living space with all the amenities they need for comfortable living.

### FIRST FLOOR





**Hi, I'm , your personal Modular Home Consultant**

I would be happy to help you with any questions you may have. You can contact me on my direct number at or email me at .