

ROXBURY . DHG-039

Traditional



SPECIFICATIONS

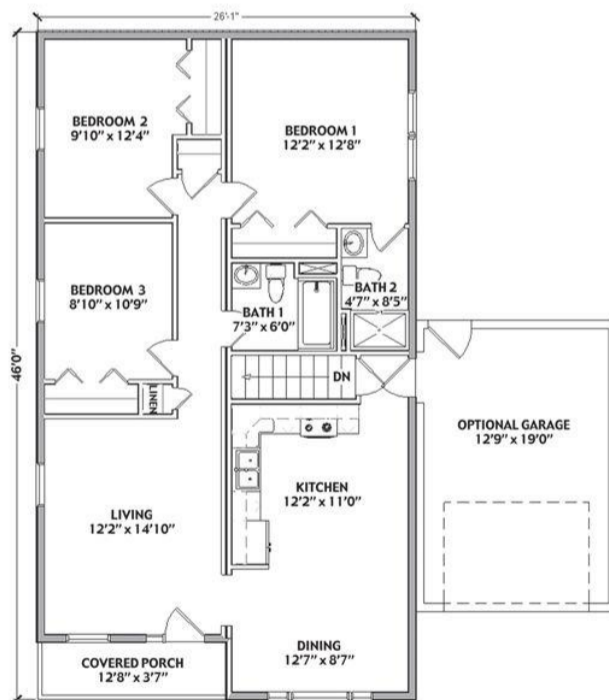
SQ. FT.	1077
BEDROOMS:	3
BATHROOMS:	2.0
LEVELS:	1

OPTIONAL FEATURES

- Green Certification
- Energy Star

The Roxbury is such a nice home with its covered porch and large windows. Inside you will find this plan very efficiently laid out with all living spaces at the front of the home and all three bedrooms in the back of the home. Kitchen is L-Shaped and is open to the dining room. Master bedroom includes master bath.

FIRST FLOOR



YOUR
NEW HOME
CONSULTANT



Hi, I'm , your personal Modular Home Consultant

I would be happy to help you with any questions you may have. You can contact me on my direct number at or email me at .

