

# FAIRVIEW . DHG-019

Traditional



## SPECIFICATIONS

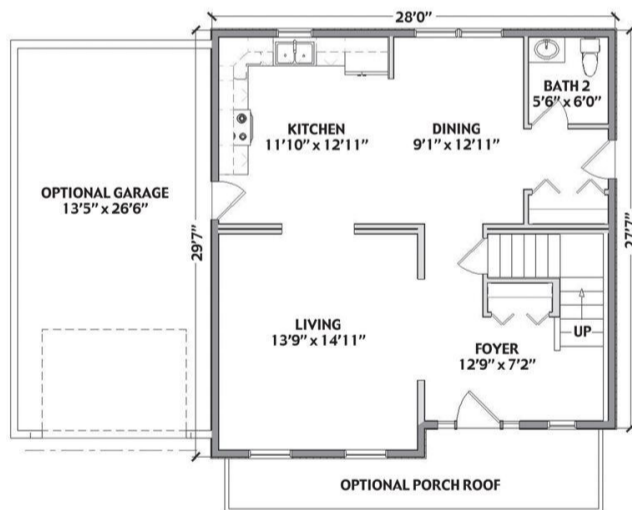
SQ. FT.	1490
BEDROOMS:	3
BATHROOMS:	1.5
LEVELS:	2

## OPTIONAL FEATURES

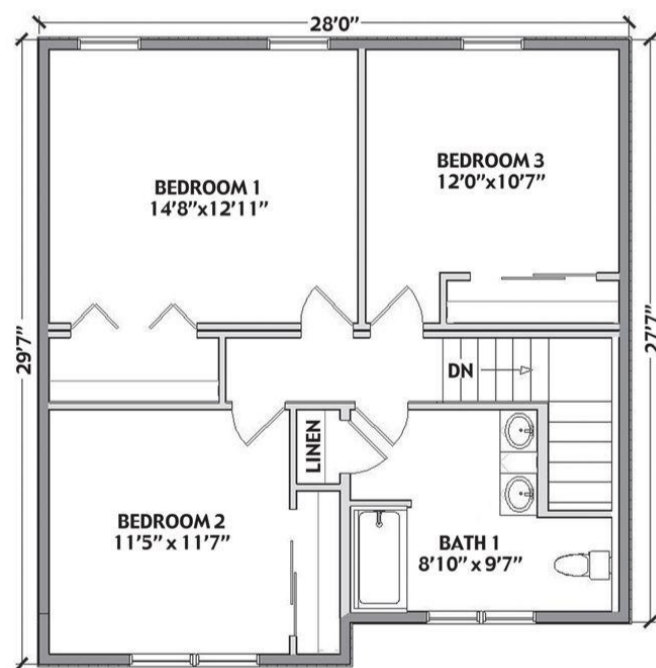
- Green Certification
- Energy Star

This plan is a beautiful mix of design and functionality which provides the most efficient use of space possible in a 1490 square foot home. The generous porch at the front adds curb appeal, inviting you to sit a spell. The second floor has 3 bedrooms and one bath, plus a linen closet.

### FIRST FLOOR



### SECOND FLOOR



YOUR  
NEW HOME  
CONSULTANT



Hi, I'm , your personal Modular Home Consultant

I would be happy to help you with any questions you may have. You can contact me on my direct number at or email me at .

