

BELMONT . DHG-008

Traditional



SPECIFICATIONS

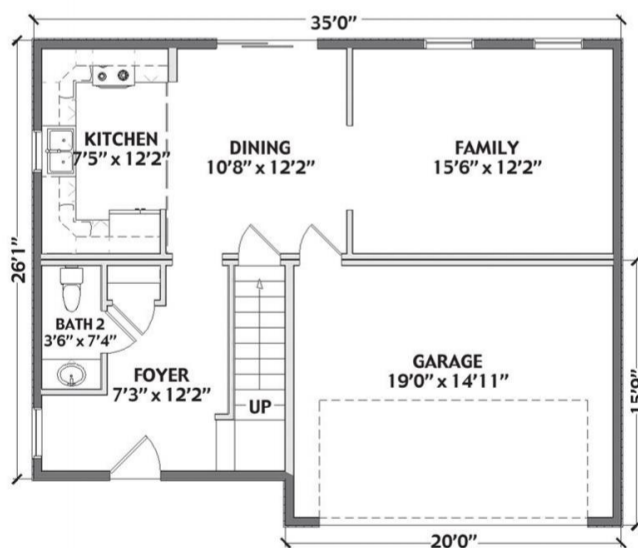
SQ. FT.	1462
BEDROOMS:	3
BATHROOMS:	1.5
LEVELS:	2

OPTIONAL FEATURES

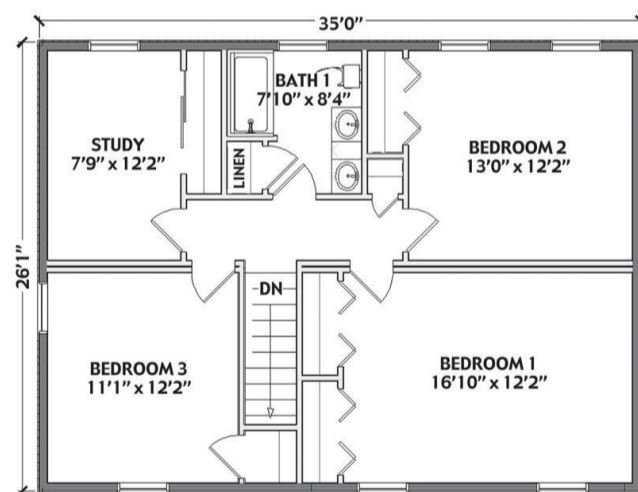
- Green Certification
 - Energy Star
 - Garage
- Included

The Belmont is an open floor plan with a U-Shaped Kitchen open to the dining room and family room. The foyer has a powder room. The second floor boasts not only three nice bedrooms and a bath but also a study. The upstairs bath has dual vanities.

FIRST FLOOR



SECOND FLOOR



YOUR
NEW HOME
CONSULTANT



Hi, I'm , your personal Modular Home Consultant

I would be happy to help you with any questions you may have. You can contact me on my direct number at or email me at .

