

# AUBURN . DHG-005

Traditional



## SPECIFICATIONS

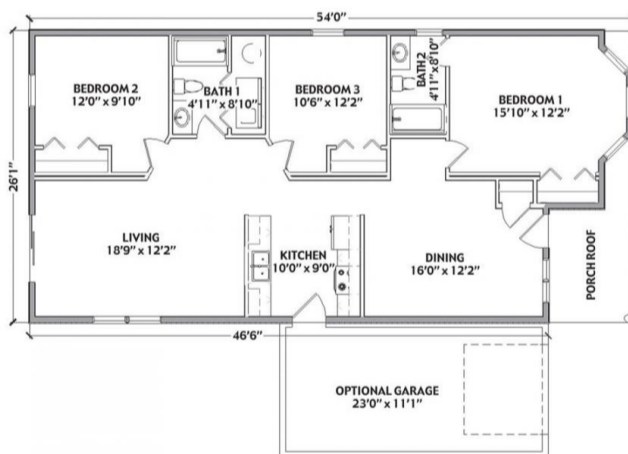
SQ. FT.	1344
BEDROOMS:	3
BATHROOMS:	2.0
LEVELS:	1

## OPTIONAL FEATURES

- Green Certification
- Energy Star

The Auburn has great curb appeal with its covered porch and bump out. In the master bedroom you get a very light and airy feeling with all the windows in the bump out. Living room is toward that back of the home with patio doors to let in all the sunshine.

## FIRST FLOOR



YOUR  
NEW HOME  
CONSULTANT



Hi, I'm , your personal Modular Home Consultant

I would be happy to help you with any questions you may have. You can contact me on my direct number at or email me at .

