

# PORTSMOUTH . DDR-048

Traditional



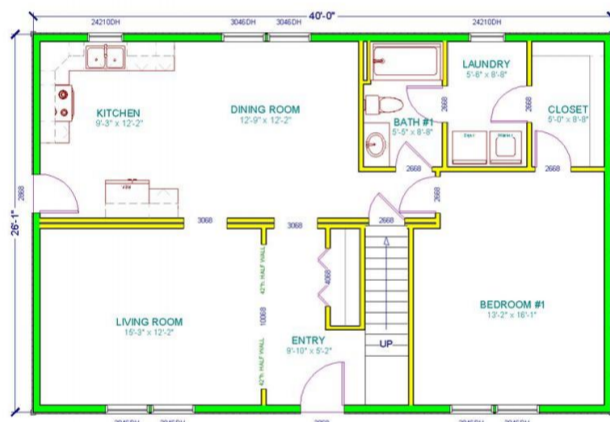
## SPECIFICATIONS

SQ. FT.	1560
BEDROOMS:	3
BATHROOMS:	2.0
LEVELS:	2

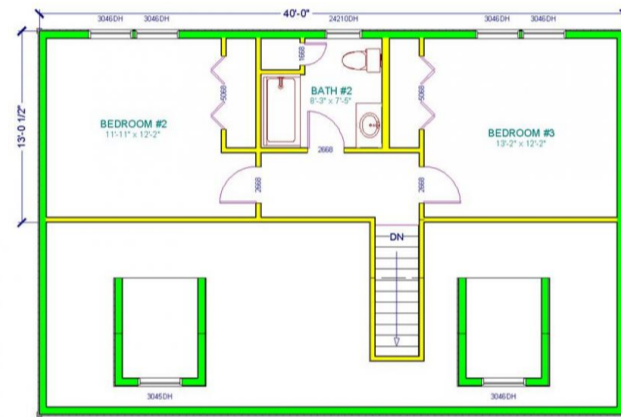
## OPTIONAL FEATURES

- Green Certification
- Energy Star

### FIRST FLOOR



### SECOND FLOOR



YOUR  
NEW HOME  
CONSULTANT



Hi, I'm , your personal Modular Home Consultant

I would be happy to help you with any questions you may have. You can contact me on my direct number at or email me at .

