



SPECIFICATIONS

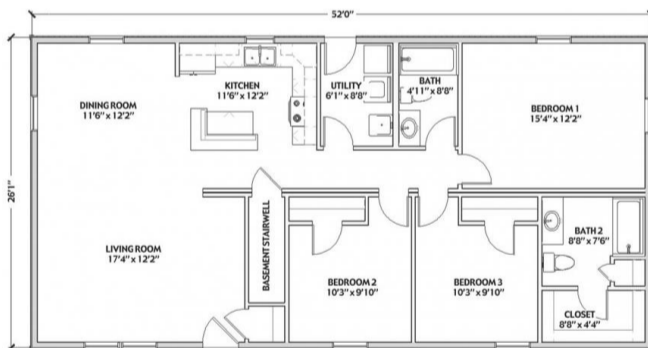
SQ. FT.	1352
BEDROOMS:	3
BATHROOMS:	2.0
LEVELS:	1

OPTIONAL FEATURES

- Green Certification
- Energy Star

This plan is for the modern family with its open floor plan. The L-Shaped kitchen has an island that you can have the kids doing homework while you are preparing dinner. The utility room has a door out to the back of the home and has a sink that is great for those muddy shoes.

FIRST FLOOR



YOUR
NEW HOME
CONSULTANT



Hi, I'm , your personal Modular Home Consultant

I would be happy to help you with any questions you may have. You can contact me on my direct number at or email me at .

