

FILLMORE . DDR-018

Traditional



SPECIFICATIONS

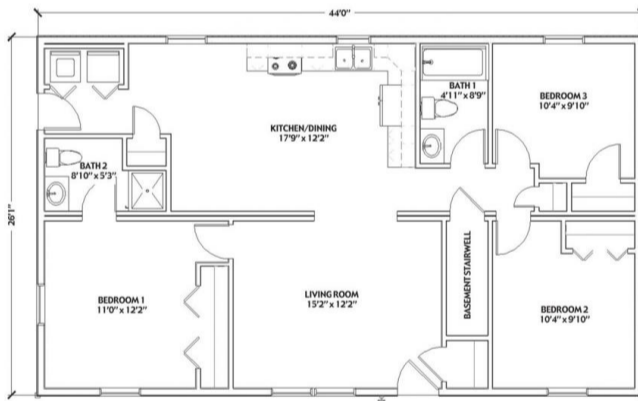
SQ. FT.	1144
BEDROOMS:	3
BATHROOMS:	2.0
LEVELS:	1

OPTIONAL FEATURES

- Green Certification
- Energy Star

This Traditional exterior has styling that will be timeless and provide a great look for any neighborhood. The wide open floor plan of the Fillmore is a homebuyer's answer when looking for an affordable home with plenty of room.

FIRST FLOOR



YOUR
NEW HOME
CONSULTANT



Hi, I'm , your personal Modular Home Consultant

I would be happy to help you with any questions you may have. You can contact me on my direct number at or email me at .

