

# CHICAGO . DDR-011

Traditional



## SPECIFICATIONS

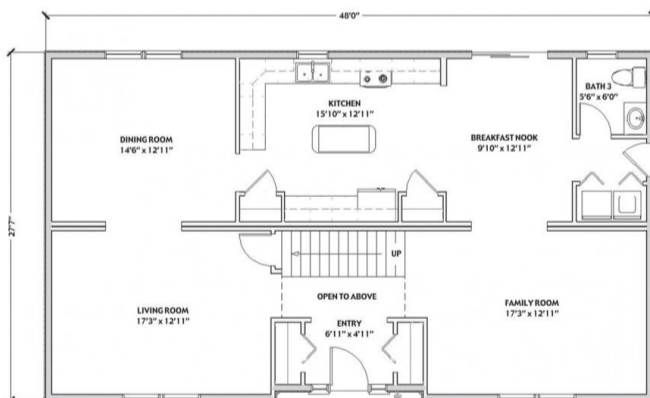
SQ. FT.	2628
BEDROOMS:	4
BATHROOMS:	2.5
LEVELS:	1

## OPTIONAL FEATURES

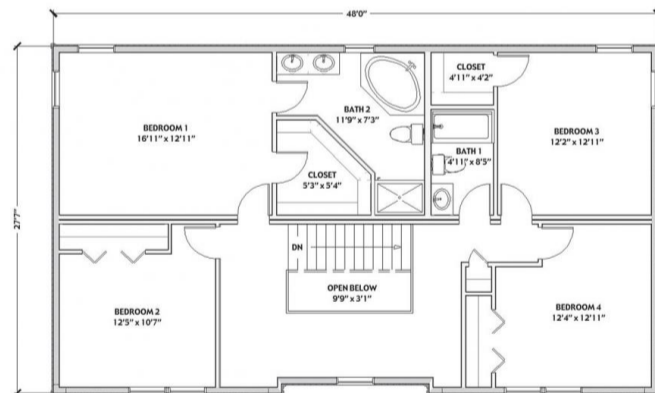
- Green Certification
- Energy Star

This home's main floor is charming and modern with the family, kitchen and dining room all open to each other and anchoring the rear of the home. A kitchen island and open floor plan layout give the home a spacious atmosphere, while the larger laundry room and powder bath add amenities. The second floor boasts the master suite and three other bedrooms.

### FIRST FLOOR



### SECOND FLOOR



YOUR  
NEW HOME  
CONSULTANT



Hi, I'm , your personal Modular Home Consultant

I would be happy to help you with any questions you may have. You can contact me on my direct number at or email me at .

