

BEDFORD . DDR-007

Traditional



SPECIFICATIONS

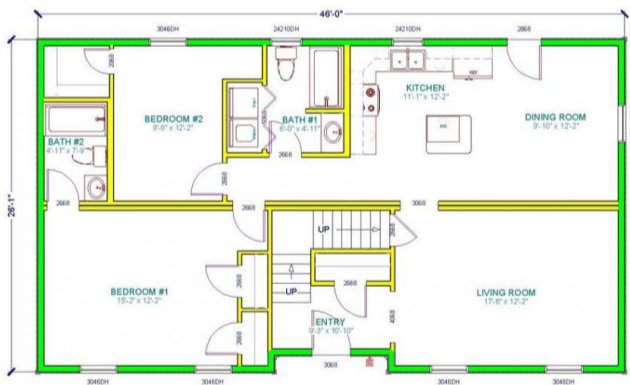
SQ. FT.	1183
BEDROOMS:	2
BATHROOMS:	2
LEVELS:	1.5

OPTIONAL FEATURES

- Green Certification
- Energy Star

This home plan is designed with efficiency in mind. The open kitchen/dining combo has a back door that leads out to the yard for perfect grilling days with family and friends. Kitchen also has a prep island with a raised bar so that family or friends can visit while you are preparing food for the grill. The washer and dryer and conveniently located in the bathroom. Master bedroom has a bathroom and his and hers closets.

FIRST FLOOR



YOUR
NEW HOME
CONSULTANT



Hi, I'm , your personal Modular Home Consultant

I would be happy to help you with any questions you may have. You can contact me on my direct number at or email me at .

