

# BAYSHORE. DMV-005

Traditional



### SPECIFICATIONS

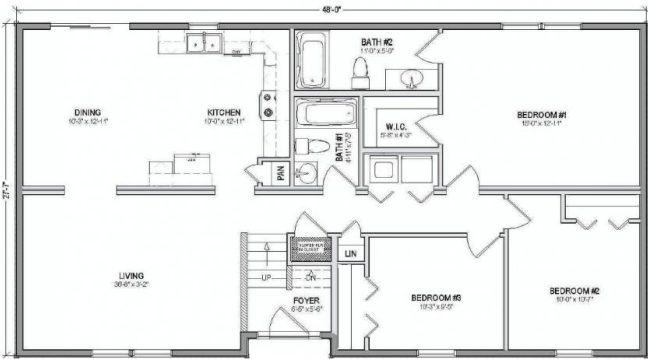
SQ. FT.	1320
BEDROOMS:	3
BATHROOMS:	2.0
LEVELS:	1

### OPTIONAL FEATURES

- ☒ Green Certification
- ☒ Energy Star

When you enter the foyer of The Bayshore you will find that the living areas are on the left and the sleeping areas are on the right. The kitchen is open to the dining room for easy living for the whole family. Washer and dryer are conveniently located in the hall surrounded by the bedrooms.

### FIRST FLOOR



YOUR  
NEW HOME  
CONSULTANT

Hi, I'm , your personal Modular Home Consultant

I would be happy to help you with any questions you may have. You can contact me on my direct number at or email me at .