

# BRIARCLIFF . DRS-001

Traditional



## SPECIFICATIONS

SQ. FT.	5230
BEDROOMS:	4
BATHROOMS:	3.5
LEVELS:	2

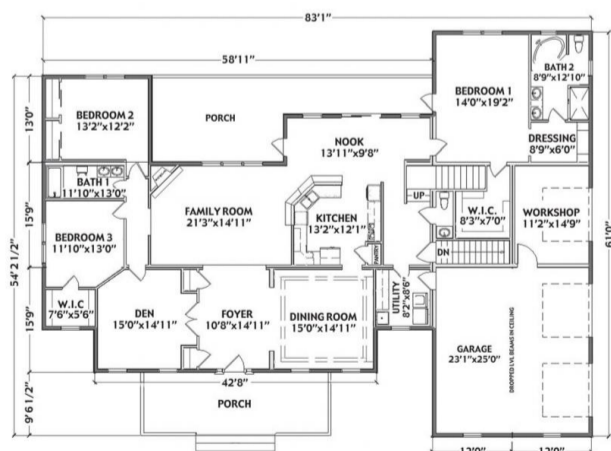
## OPTIONAL FEATURES

- Green Certification
- Energy Star

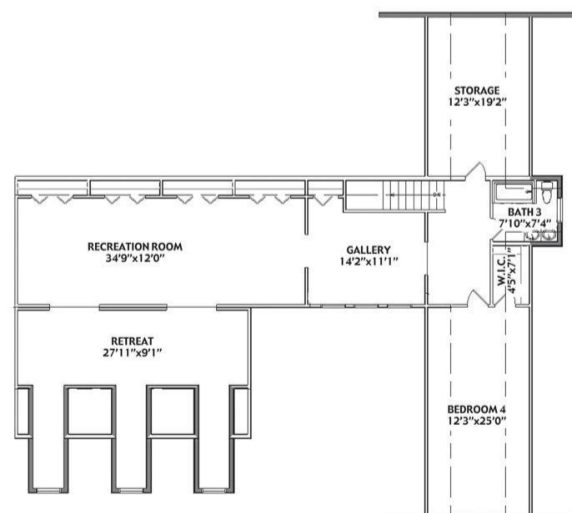
This traditional country home features an array of family-friendly amenities. Optional triple dormers and a covered front porch can enhance the exterior of this beautiful home. The formal foyer provides access to the dining room, den, and family room with fireplace. Three bedrooms, including the master bedroom with a private bath and roomy dressing area, are on the main level. An optional fourth bedroom is on the second floor along with a recreation room, gallery, retreat room, and storage area. There is something for every family member in this home.

Note: Cape Models come with an unfinished 2nd floor that can be completed on site. Listed square footage, bedrooms, and baths include 2nd story living.

### FIRST FLOOR



### SECOND FLOOR



YOUR  
NEW HOME



Hi, I'm , your personal Modular Home Consultant



I would be happy to help you with any questions you may have. You can contact me on my direct number at or email me at .

