

CRAFTSMAN COTTAGE. ESL-002

Contemporary



SPECIFICATIONS

SQ. FT.	945
BEDROOMS:	2
BATHROOMS:	1.0
LEVELS:	2.0

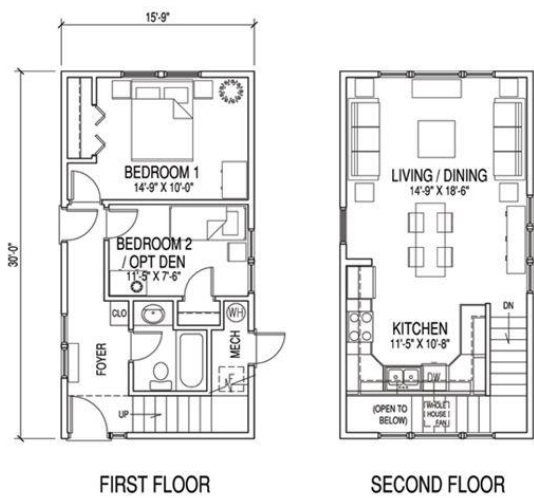
OPTIONAL FEATURES

- ☒ Green Certification
- ☒ Energy Star

Ideal for a first home or a weekend getaway, the Craftsman Cottage offers a reverse two-story design, with bedrooms on the first floor and the main living space on the second floor, offering grand views, extra privacy and an open floor plan. The front stairs and kitchen bask in sunlight from the large Palladian windows. A unique kitchen design with suspended two-sided overhead glass door cabinets near the kitchen sink and an open wall design allow the light to flood through. This home is a great fit for a narrow lakefront lot or any location where lot size is limited.

This home is ENERGY STAR and green ready, affordable and, in most cases, can be set and finished in as little as one day. Optional appliance package available.

FLOOR PLAN





Hi, I'm , your personal Modular Home Consultant

I would be happy to help you with any questions you may have. You can contact me on my direct number at or email me at .