



SPECIFICATIONS

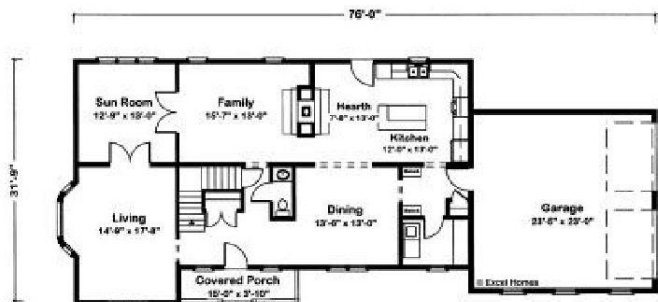
SQ. FT.	2734
BEDROOMS:	4
BATHROOMS:	2.5
LEVELS:	2.0

OPTIONAL FEATURES

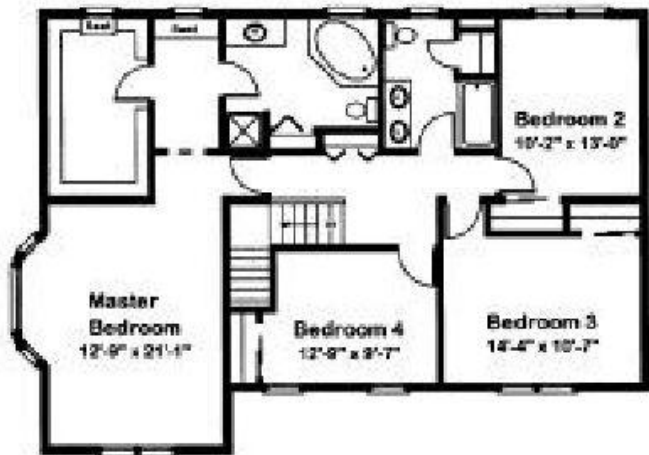
- ☒ Green Certification
- ☒ Energy Star
- ☒ Garage
- Included

The interest of Edison. Both the living and family rooms access the sun room via French doors. Sharing a see-through fireplace with the family room, the hearth area is a perfect spot to relax after work or dinner. With its bayed window, window seats and deluxe bath, the master suite is loaded with amenities.

FIRST FLOOR



SECOND FLOOR



YOUR
NEW HOME
CONSULTANT

Hi, I'm , your personal Modular Home Consultant

I would be happy to help you with any questions you may have. You can contact me on my direct number at or email me at .