

CRESTWOOD 3A. ETS-013

Traditional



SPECIFICATIONS

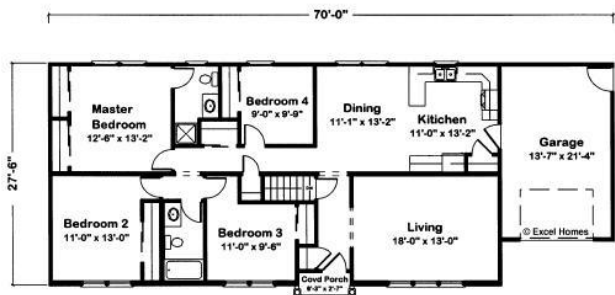
SQ. FT.	1529
BEDROOMS:	4
BATHROOMS:	1.5
LEVELS:	1.0

OPTIONAL FEATURES

- ☒ Green Certification
- ☒ Energy Star
- ☒ Garage Included

The picturesque Crestwood III A. A notable elevation harmoniously blends brick, siding and a distinctive hip roof. The entry hall leads to both formal and informal areas of the home. Lovely windows throughout the home enhance being at one with your surroundings.

FIRST FLOOR



Crestwood III A
Excel Homes, LLC

1503 Finished Sq. Ft.
(All footages approximate)

YOUR
NEW HOME
CONSULTANT

Hi, I'm , your personal Modular Home Consultant

I would be happy to help you with any questions you may have. You can contact me on my direct number at or email me at .