

# TANNER RIDGE. EGR-029

Traditional



### SPECIFICATIONS

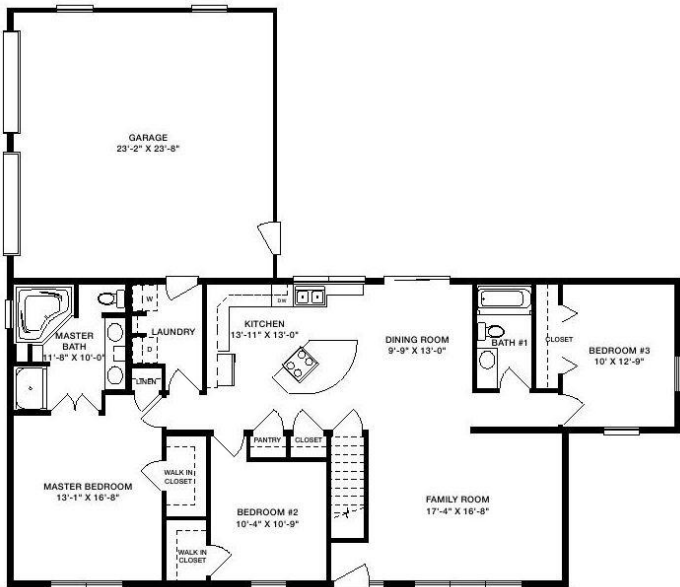
SQ. FT.	1534
BEDROOMS:	3
BATHROOMS:	2.0
LEVELS:	1.0

### OPTIONAL FEATURES

- ☒ Green Certification
- ☒ Energy Star
- ☒ Garage
- Included

Style meets practicality through the striking Tanner Ridge plan. Designed for active families who want a home that does it all, the plan offers an impressive family room, formal dining room and fully equipped kitchen with a lavish center island and substantial pantry. With its rear two-car garage, the Tanner Ridge has great curb appeal. The regal master bedroom features a walk-in closet and a private master bath with Jack and Jill amenities. Completing the remarkable plan are two additional bedrooms with spacious closets, one of which is walk-in, a full bath, a generous laundry room and a handy linen closet.

### FIRST FLOOR



YOUR  
NEW HOME  
CONSULTANT



Hi, I'm Justin Bryant, your personal Modular Home Consultant

I would be happy to help you with any questions you may have. You can contact me on my direct number at **(877) 410-6334** or email me at [justin.bryant@impresamodular.com](mailto:justin.bryant@impresamodular.com).