

NORWOOD . EGR-022

Traditional



SPECIFICATIONS

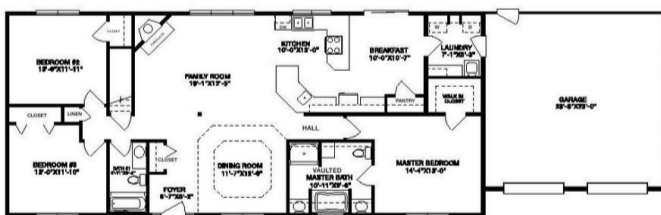
SQ. FT.	1760
BEDROOMS:	3
BATHROOMS:	2.0
LEVELS:	1.0

OPTIONAL FEATURES

- Green Certification
- Energy Star
- Garage Included

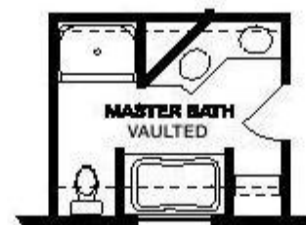
Enjoy the luxury of a private master bath with a vaulted ceiling - just one of many special touches on the Norwood plan. Set off by a private hallway, the master bedroom also opens to a luxurious walk-in closet. Most notable, however, is the sweeping layout of the kitchen and breakfast room, with a large pantry and sensational counter space. The family room is graced by a corner fireplace and the formal dining room beckons invitingly for special gatherings. The Norwood also features two additional extensive bedrooms with another full bath, as well as a two-car garage, a laundry room, a front foyer and extra closet space.

FIRST FLOOR



OPTIONAL MASTER BATH

OPTIONAL MASTER BATH



YOUR
NEW HOME
CONSULTANT



Hi, I'm , your personal Modular Home Consultant

I would be happy to help you with any questions you may have. You can contact me on my direct number at or email me at .

