

MINERVA. EGR-020

Traditional



SPECIFICATIONS

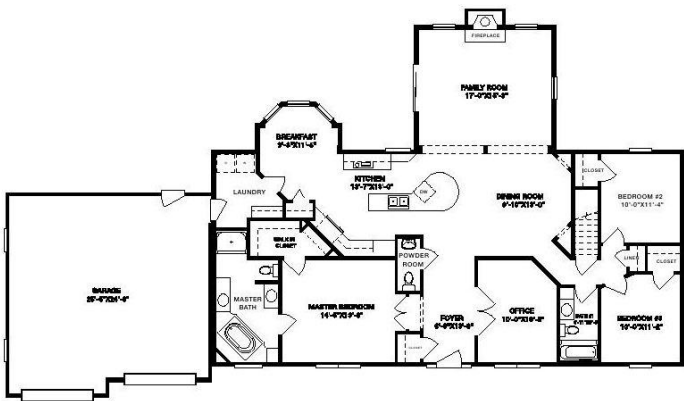
SQ. FT.	1992
BEDROOMS:	3
BATHROOMS:	2.5
LEVELS:	1.0

OPTIONAL FEATURES

- ☒ Green Certification
- ☒ Energy Star
- ☒ Garage
- Included

Imagine relaxing and sipping your favorite beverage in a cozy breakfast nook featuring a beautiful bay window. That’s just one of the thrills you get with the Minerva plan. The colossal kitchen affords a curvaceous center island and shelving galore, with the formidable dining room conveniently close. An incredible family room with a fetching fireplace awaits just beyond the dining room. When it’s time for some privacy, escape to the extravagant master bedroom, featuring a fabulous walk-in closet and exceptional master bath with a whirlpool or soaking tub, shower and dual sinks. Two additional bedrooms offer sizable closets and have a full bath and linen closet nearby. The Minerva also serves up a two-car garage, powder room, laundry room, office and front foyer. Optional layouts are available for the office space.

FIRST FLOOR



OPTIONAL LIVING ROOM

OPTIONAL LIVING ROOM



YOUR
NEW HOME
CONSULTANT

Hi, I'm , your personal Modular Home Consultant

I would be happy to help you with any questions you may have. You can contact me on my direct number at or email me at .