

# WESTGATE. EEL-019

Traditional



### SPECIFICATIONS

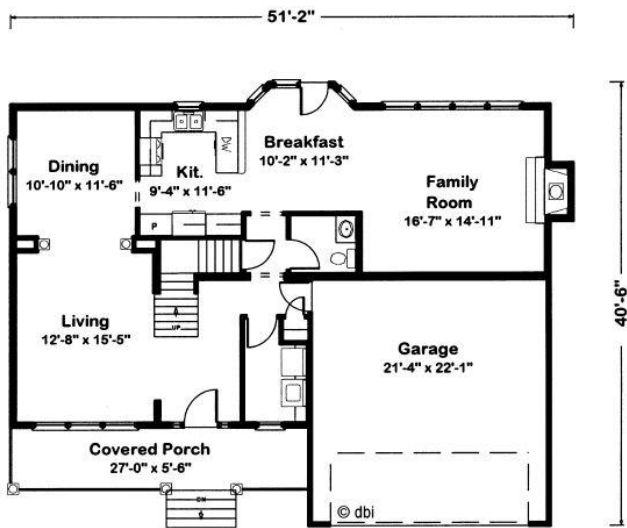
SQ. FT.	2135
BEDROOMS:	3
BATHROOMS:	2.0
LEVELS:	2.0

### OPTIONAL FEATURES

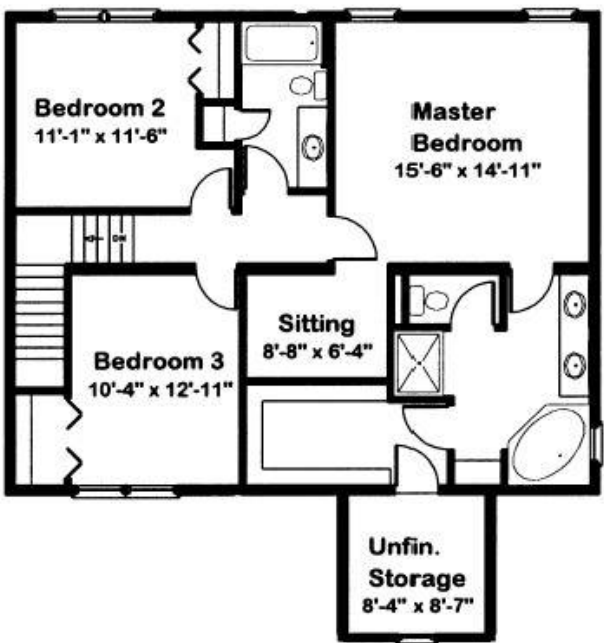
☒ Green Certification    ☒ Energy Star    ☒ Garage Included

This picturesque porch offers the perfect spot to sip lemonade on a warm, sunny day. Inside, columns visually divide the living and dining rooms while allowing family and friends to move freely between the rooms. A wall of windows makes the family room and breakfast are a especially cheery. The master suite is sure to please with a corner whirlpool, private sitting area and unfinished storage.

#### FIRST FLOOR



#### SECOND FLOOR



YOUR  
NEW HOME  
CONSULTANT



Hi, I'm Butch Mullinix, your personal Modular Home Consultant

I would be happy to help you with any questions you may have. You can contact me on my direct number at (877) 410-6966 or email me at

