

# HILLSDALE. EEL-013

Traditional



## SPECIFICATIONS

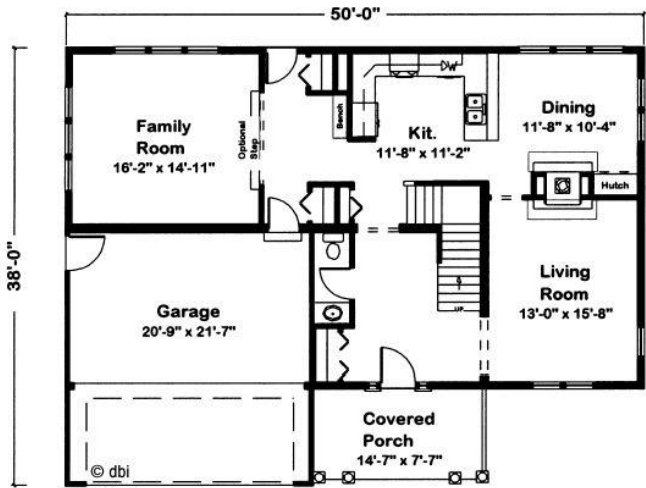
SQ. FT.	2132
BEDROOMS:	3
BATHROOMS:	2.5
LEVELS:	2.0

## OPTIONAL FEATURES

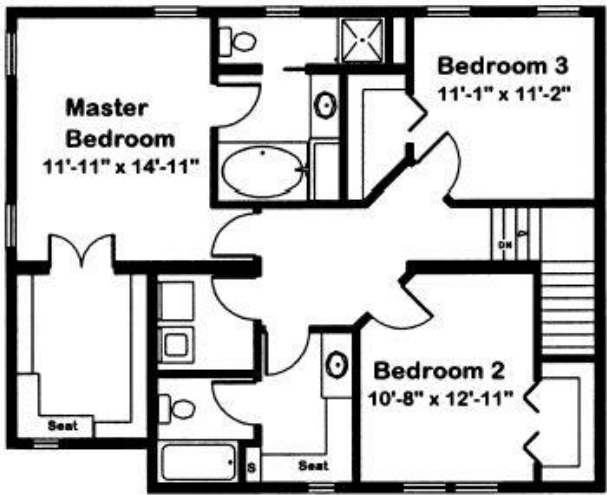
- ☒ Green Certification
- ☒ Energy Star
- ☒ Garage
- Included

A pair of double columns creates a pleasing approach to the front door. Just inside, a spacious entry provides a lovely spot to greet guests and see them off. A see-thru fireplace adds warmth to gatherings in the dining and living rooms. In the master suite, a compartmented bath allows two people to use different areas. With the washer and dryer near all the bedrooms, everyone can pitch in with laundry.

### FIRST FLOOR



### SECOND FLOOR



YOUR  
NEW HOME  
CONSULTANT

Hi, I'm , your personal Modular Home Consultant

I would be happy to help you with any questions you may have. You can contact me on my direct number at or email me at .