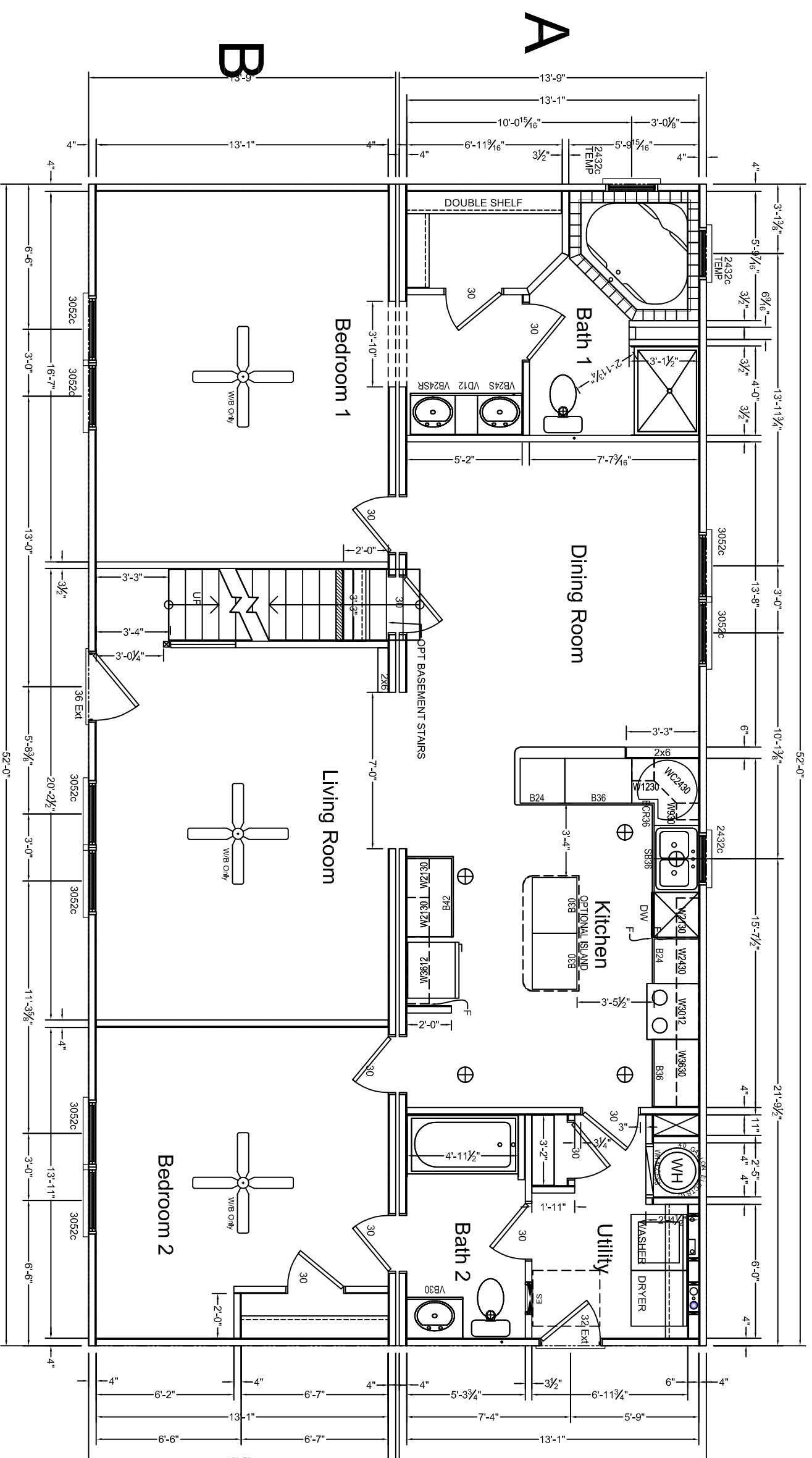


REVISIONS		BY	
DATE	REVISION	MODEL:	HandCrafted Homes
		BUILDER:	BURGESS
		DATE:	-07
		FILENAME:	P-
		SCALE:	3/16" = 1'-0"
		SERIAL NUMBER:	SN
		PAGE:	

101 Eastern Minerals Road, Henderson, N.C. 27537
 Phone: 252-436-0001 Fax: 252-430-6662



X MODULES X LINE MOVES

**Total SQ
FT**

Story	Base Area
1st story	1438.667
2nd story Unfinished	929.07
	2367.736

3RD PARTY SEAL

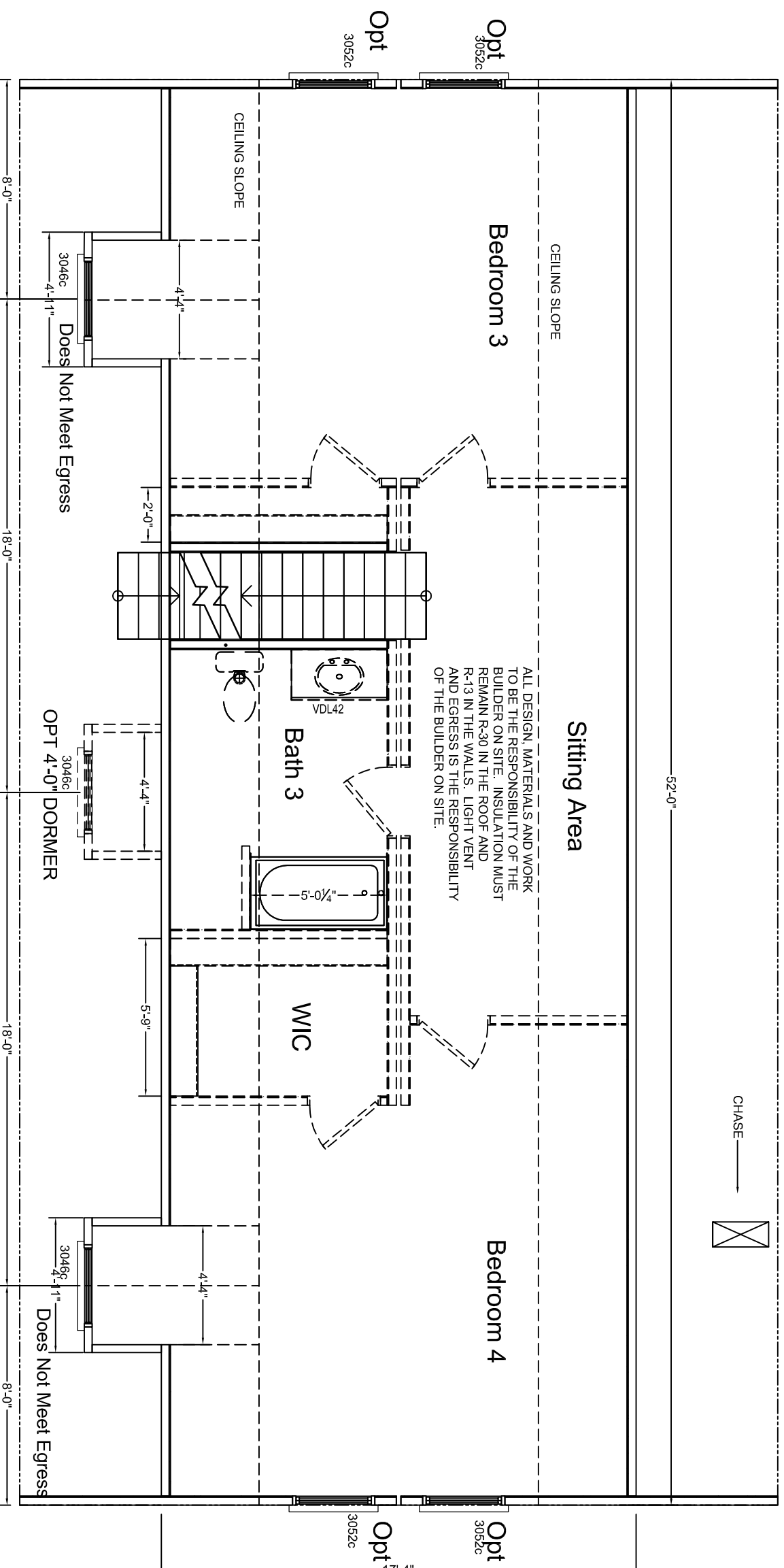
- NOTES:
1. IT IS THE BUILDERS RESPONSIBILITY TO CONFIRM WITH THE SALES REPRESENTATIVE THAT ALL INFORMATION SHOWN ON THE PLANS HAS BEEN INCLUDED ON THE SALES ORDER. *THE SALES ORDER IS THE FINAL CONTRACT.*
 2. PHONE, TV, RECESSED LIGHTS AND ANY OTHER SPECIFIC ITEM ON THE SALES ORDER MUST BE LOCATED ON A SIGNED FLOORPLAN.
 3. MATERIALS TO FINISH THE MARRIAGE WALL WILL BE SHIPPED LOOSE INSIDE THE UNIT(S). THE INSTALLATION WILL BE THE RESPONSIBILITY OF THE BUILDER. THESE ITEMS INCLUDE, BUT ARE NOT LIMITED TO DOORS, JAMBS, CASINGS, TRIM, SHEETROCK.

REVISIONS		BY	MODEL:	DATE:	FILENAME:	SERIAL NUMBER:	PAGE:
DATE	REVISION		Burgess	2009	Burgess-07	SN	Floorplan 1
			DRWN				Sheet 1

HandCrafted Homes

101 Eastern Minerals Road, Henderson, N.C. 27537
Phone: 252-436-0001 Fax: 252-430-6662

03.1



**Total SQ
FT**

Story	Base Area
1st story	1438.667
2nd story Unfinished	929.07
	2367.736

3RD PARTY SEAL

- NOTES:
1. IT IS THE BUILDERS RESPONSIBILITY TO CONFIRM WITH THE SALES REPRESENTATIVE THAT ALL INFORMATION SHOWN ON THE PLANS HAS BEEN INCLUDED ON THE SALES ORDER. "THE SALES ORDER IS THE FINAL CONTRACT."
 2. PHONE, TV, RECESSED LIGHTS AND ANY OTHER SPECIFIC ITEM ON THE SALES ORDER MUST BE LOCATED ON A SIGNED FLOORPLAN. ITEMS NOT LOCATED IN THIS MANNER WILL BE PLACED UNDER THE DISCRETION OF ENGINEERING.
 3. MATERIALS TO FINISH THE MARRIAGE WALL WILL BE SHIPPED LOOSE INSIDE THE UNIT(S). THE INSTALLATION WILL BE THE RESPONSIBILITY OF THE BUILDER. THESE ITEMS INCLUDE, BUT ARE NOT LIMITED TO DOORS, JAMBS, CASINGS, TRIM, SHEETROCK.

REVISIONS

DATE	REVISION	BY

HandCrafted Homes

MODEL:	Burgess
DRAWN BY:	DRWN

BUILDER:	BLDR
DATE:	2009

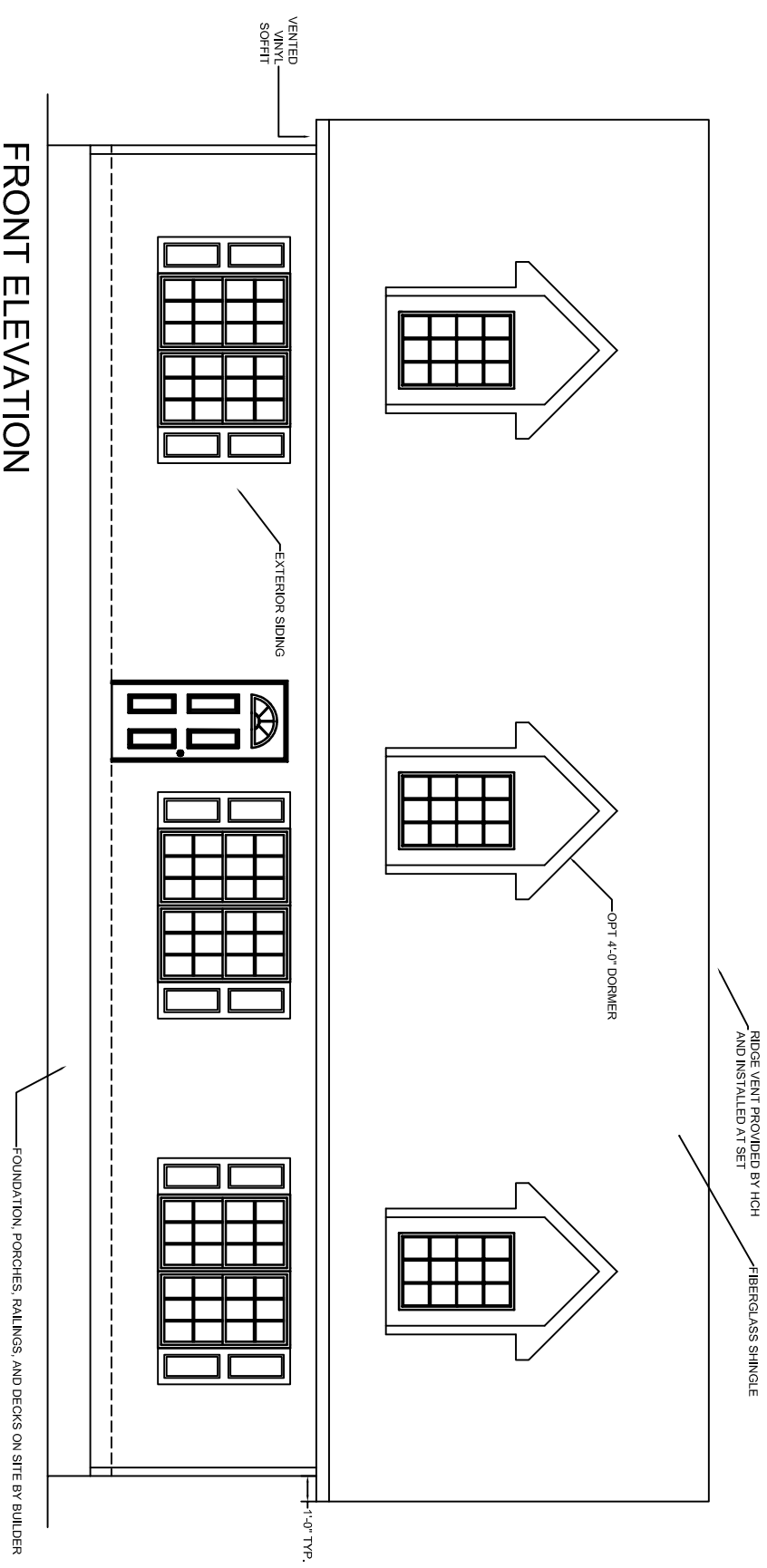
FILENAME:	Burgess-07
SCALE:	

SERIAL NUMBER:	SN
----------------	----

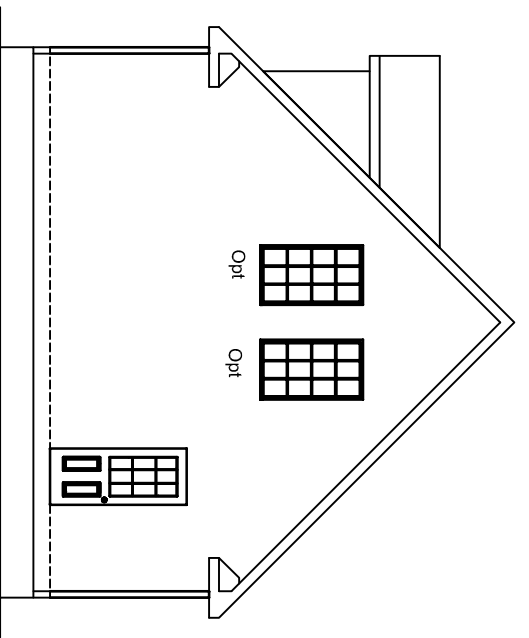
PAGE:	Floorplan 2
SHEET:	Sheet 2

03.2

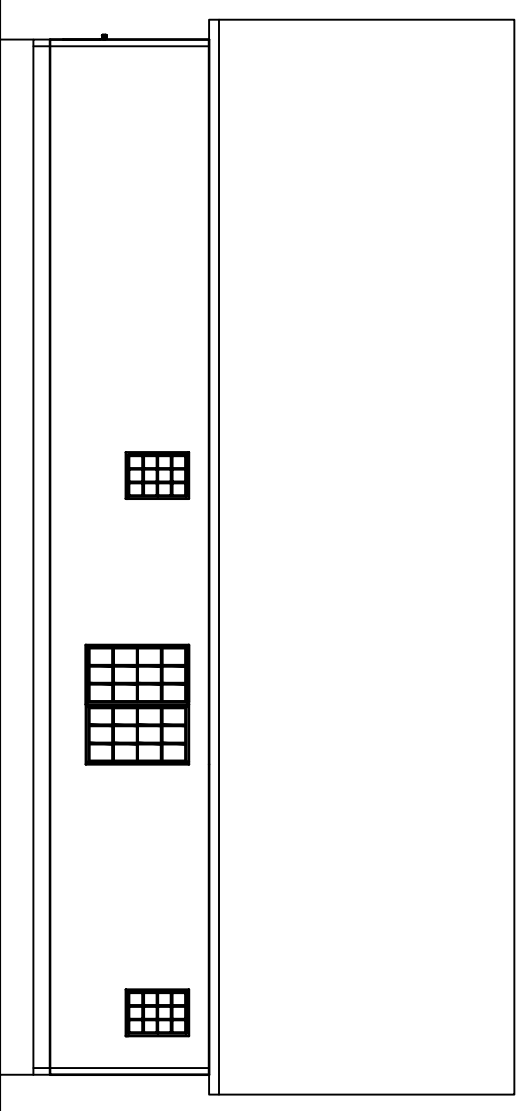
101 Eastern Minerals Road, Henderson, N.C. 27537
Phone: 252-436-0001 Fax: 252-430-6662



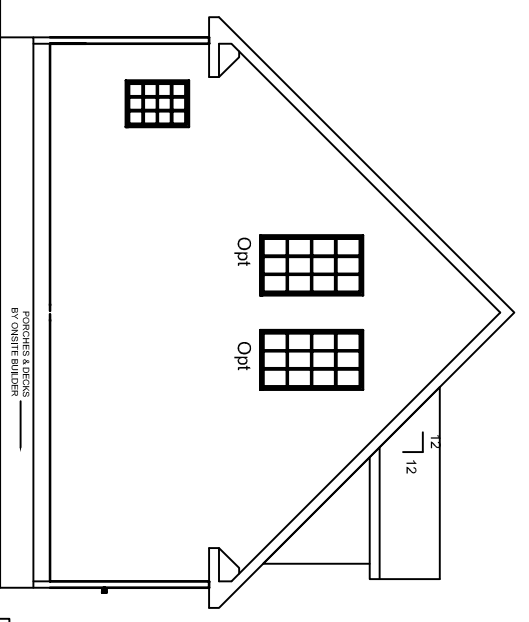
FRONT ELEVATION



RIGHT ELEVATION



REAR ELEVATION



LEFT ELEVATION

3RD PARTY SEAL

NOTES:
 1. MATERIALS FOR GABLE ENDS AND OTHER MODULE UNIONS IS SHIPPED LOOSE WITH THE UNITS. IT IS THE RESPONSIBILITY OF THE BUILDER TO INSTALL THESE COMPONENTS PER MANUFACTURERS INSTRUCTIONS
 THESE COMPONENTS INCLUDE BUT ARE NOT LIMITED TO SIDING, FASCIA, SOFFIT.
 1. MATERIALS TO COMPLETE THE ROOF ASSEMBLY IS PROVIDED BY HCH AND SHIPPED LOOSE WITH THE UNITS(S). IT IS THE RESPONSIBILITY OF THE BUILDER TO INSTALL THESE COMPONENTS USING THE FASTENING DETAILS PROVIDED BY HCH. THESE ITEMS INCLUDE BUT ARE NOT LIMITED TO DORMERS, GABLE END WALLS, KNEE WALLS, SHINGLES (FASTENED PER MII).

REVISIONS		BY		MODEL:		BUILDER:		FILENAME:		SERIAL NUMBER:		PAGE:	
DATE	REVISION			Burgess	BLDR	Burgess-07	101 Eastern Minerals Road, Henderson, N.C. 27537	Ext. Elevation				05.1	
				DRWN	2009		Phone: 252-436-0001 Fax: 252-430-6662	Sheet 1					