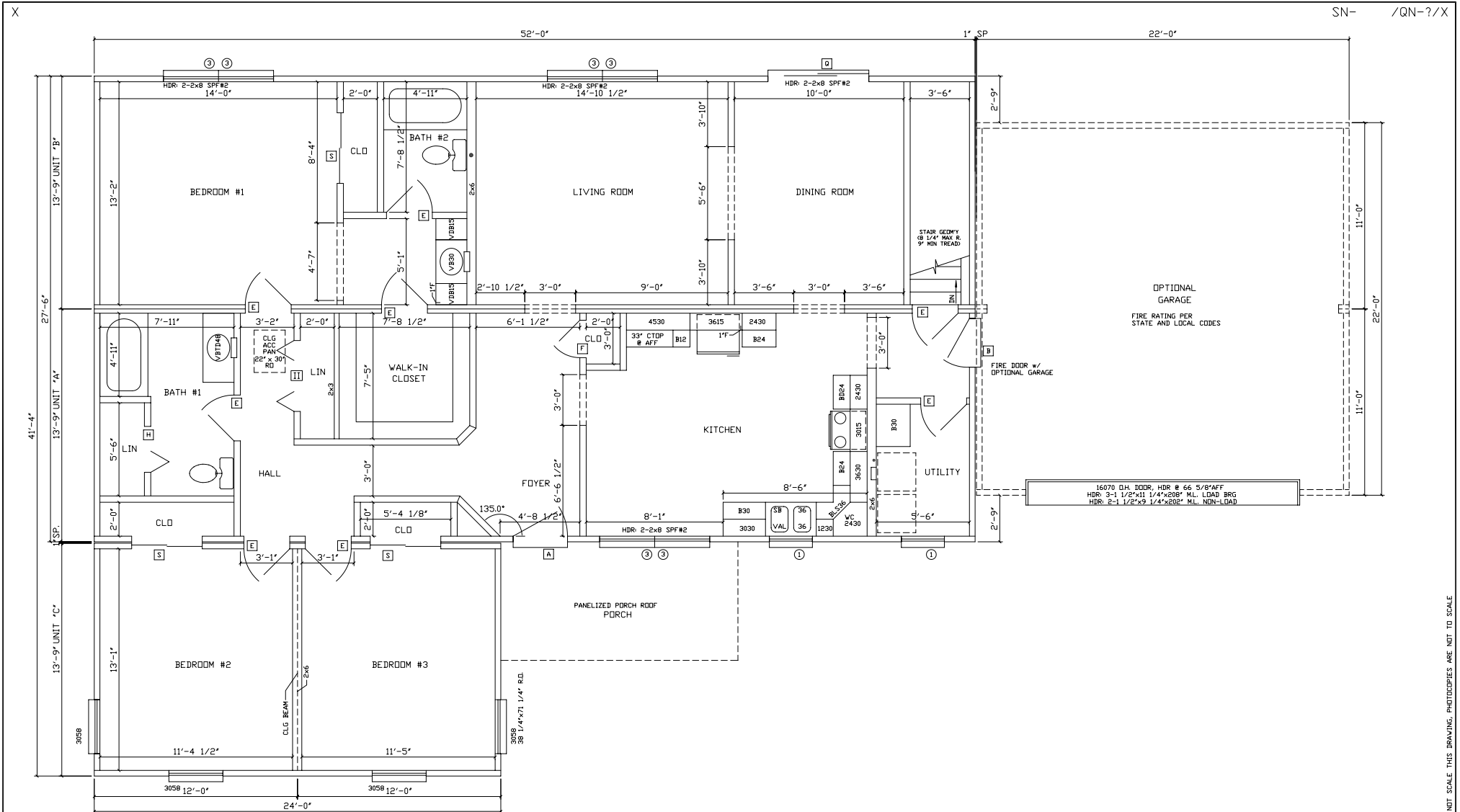


PALAMYRA

WINDOWS	EXT. DOORS	INT. DOORS	KIT. CABIN.
(6) - #3	(1) - STD. 'A'	(9) - PASSAGE	21.75 FT - WALL CAB.
(2) - #1	(1) - STD. 'B'	(1) - DBL BIFOLD	16.5 FT - BASE CAB.
(4) - 3058	(1) - STD. 'Q'	(1) - SGL BIFOLD	2.75 FT ADD'L C-TOP
		(3) - SLIDER	2.5 FT ADD'L BASE CAB UTILITY



NOTES:
 1. 2x4 SPF#2 EXT WALLS @ 16" O.C./2x3 MARR WALLS
 2. 8'-0" CLG HT.
 3. 2x10 SPF#2 FLOOR JOISTS @ 16" O.C.
 4. ROOF SYSTEM TO BE 24" O.C.
 5. 7-D SINGLE HUNG WINDOWS (#1=24210, #2=2842, #3=3048, #4=2852, #11=2558C)

excel
 HomeS
 FROM THE INSIDE
 R.R.#2 BOX 683
 LIVERPOOL, PA 17045
 (717) 444-3395
 FAX (717) 444-7577
 WWW.EXCELHOMES.COM

27⁶ 52 PALMYRA
 w/13⁹ 24 ADDITION

DRAWN BY:	CHECKED BY:	DATE:	SCALE: 1/4"=1'-0"
REVISIONS:			DISK NO: STD

10/02/01 1449

DO NOT SCALE THIS DRAWING. PHOTOCOPIES ARE NOT TO SCALE.